



**CROUTHAMEL**  **CATTLE CO.**

**Spring Bull Sale • Friday, March 6, 2026**  
Double M Sale Facility • Stanfield, OR 1:00 PM

## Welcome Cattlemen & Friends,

As we all soak up the optimism that surrounds every segment of this industry, it is so refreshing to see unprecedented demand for American Beef. The feeder industry is focused daily on trying to keep enough inventory around them, and I am not sure that we have ever seen such demand for the premium end of what is offered. As we continue to push through with tight supply, the female side of this thing is going to get crazy. The demand for the kind that will work at all levels will be highly sought after. I personally do not see this cow herd rebuilding: the competition for land, the need of labor, and an older population of producers will all be factors as we move forward.



As you have come to expect, this set of bulls has been challenged at every step of the production cycle and those that have made the cut have truly jumped through all the hoops. There are several new sire groups this year, allowing for some fresh genetic opportunity. We made the decision this year to print the book a tick earlier to get it out sooner, therefore you will notice the ultrasound measurements, REA/CWT calculations, and Carcass Epds are not included. We will provide a supplement that will have all this data included as we get closer to sale day. We have always prided ourselves on providing all possible data, allowing you to make selection decisions with no hidden pieces, and we will be happy to provide supplement sheet data to anyone upon request.

Shannon and I count our blessings daily that we can raise our family in the livestock industry. The boys are growing way too quickly and we truly enjoy doing all things Livestock as a family. They have also kept us busy chasing sports practices and games, and we are blessed to live in a great community that supports our lifestyle.

None of this is possible without a good crew that works hard every day to help produce a set of cattle that we are extremely proud of. We also could not do any of this without the unwavering support from such a great customer base. We Truly enjoy being a genetic supplier and feeder cattle procurer, and thank you for your continued trust in our program and genetics.

Cory and Family

## CROUTHAMEL BULLS AND CUSTOMER SERVICE

- Large sire groups with many full siblings out of our top producing cows
- Bulls have corresponding performance ratios in proper data sets
- Large and accurate contemporary grouping for more correct comparison
- A program that uses a "no second chance" philosophy with- in our breeding program
- Neither bulls or the cowherd have ever seen a hoof trimmer
- Top 120 out of 195 bull calves will sell
- Guaranteed to work for you. A no questions insurance policy if they don't
- Marketing assistance for your Crouthamel sired feeder cattle
- Lifetime production history listed on every bull's dam in the Pedigree Box
- We are available any time to visit with you on how to use this data in your selection process
- Delivery available, or \$100 credit/bull if you take bulls home sale day. Will also feed bulls at no charge until April 1.
- At request, bulls can be freeze branded for identification with no charge



Please join us for dinner 6 p.m.,  
the evening before the sale,  
**Thursday, March 5, 2026,** at the  
**Shiki Steakhouse**

1240 N 1st Street, Hermiston, OR 97838  
(Walking distance from the Oxford Inn & Suites)

Come out to the Double M before dinner to view the bulls.

**Hotel Block is listed under  
Crouthamel Cattle Co. • Oxford Suites**  
1050 N. 1st Street • Hermiston, OR 97838 • (541) 564-8000

If you want any assistance with hospitality, please contact  
Shannon at (509) 855-2956 or [shannon@crouthamelcattle.com](mailto:shannon@crouthamelcattle.com)



# CROUTHAMEL CATTLE CO.

Spring Bull Sale • Friday, March 6, 2026

Double M Sale Facility • Stanfield, OR 1:00 PM



**AUCTIONEER:** Rick Machado ..... (805) 501-3210

**SALE MANAGEMENT:**

P.O. BOX 709 • AUBURN, CA 95604  
info@parnelldickinson.com  
www.parnelldickinson.com



**SALE DAY PHONES:**

Cory Crouthamel..... (509) 948-6304  
John Dickinson ..... (916) 806-1919  
Jake Parnell ..... (916) 662-1298  
Shannon Crouthamel ..... (509) 855-2956

**LIVESTOCK REPRESENTATIVES:**

Jared Patterson, Western Livestock Journal ..... (208) 312-2386  
Logan Ipsen, Western Livestock Journal ..... (916) 947-2392  
Mark Frisbie, Special Assignment ..... (208) 890-4517  
Rod Wesselman, Special Assignment ..... (509) 750-2185  
Jake Pickering, Western Ag Reporter ..... (530) 415-5484

**SALE LOCATION:** The sale will be held at Double M Sale Facility in Stanfield, OR. (Map on Page 43.)

GPS Address: 30256 Stanfield Meadows Road  
Stanfield, OR 97875

Directions: Take Exit 182 off Interstate 84  
Turn North, then take the  
first right on Stanfield Meadows Rd  
Second driveway on the right

**ACCOMMODATIONS:**

Oxford Suites, Hermiston, OR..... (541) 564-8000  
(Request Crouthamel Block Rate)  
Holiday Inn Express & Suites, Hermiston, OR... (541) 585-5656

**SEMEN TESTING:** All bulls have passed a rigid breeding soundness and fertility examination performed by Dr. Terry McCoy, DVM, La Grande, OR.

**LUNCH AND HOSPITALITY:** A complimentary tri-tip lunch will be served at Noon, and refreshments courtesy of Northwest Farm Credit will be available throughout the day.

**DISCLAIMER:**

Crouthamel Cattle Co., Double M Ranch, Inc., and Parnell Dickinson, Inc. assume no liability for any accidents or injury that may occur. Attend the sale at your own risk.

**LIVESTOCK INSURANCE:** David Yackley of Tennessee Ag insurance will be providing mortality and infertility insurance. He will be on-site at the sale, or you can reach him at (731) 879-3080.



**FIRST BREEDING SEASON GUARANTEE:**

All bulls selling for \$2500 or more will be covered 50% by the seller through the first 90 days of turnout. 50% of the value of the injured bull minus one-half salvage value will be given as credit in a future sale or toward a replacement bull if one is available. A veterinarian must diagnose all injured bulls. Please notify us as soon as possible should an injury occur and prior to bull being sold for salvage. ALL CLAIMS MUST BE MADE BY SEPTEMBER 1, 2026.

**DELIVERY:** Take your bulls home sale day from Stanfield and receive \$100 credit per head from your purchase (maximum \$400). We also offer free delivery within Oregon and adjoining states. Bulls will be kept at no charge until April 1, 2026.

**TERMS AND CONDITIONS:** Any announcements from the block will take precedence over statements in the printed material. Cattle will sell under the suggested Terms and Conditions of the American Angus Association. Terms of the sale are cash, and all purchases must be settled for SALE DAY unless prior arrangements have been made. Cattle not paid within 30 days of sale will be assessed a 2% interest charge per month.

**RETAINED INTEREST:** Crouthamel Cattle Company will retain one-third (1/3) interest in each bull selling. Buyer receives FULL POSSESSION and FULL SALVAGE of these bulls.

**VIDEOS OF BULLS:** Individual bull videos are available at [www.crouthamelcattle.com](http://www.crouthamelcattle.com)

**INTERNET BIDDING:** To register for the auction and follow in real time on the internet, logon to the Website: <http://www.dvauction.com>.



Catalog: *Strammen Livestock Services*, Solen, ND • (701) 290-3886



## *Crouthamel Cattle Company Herd Health and VAC Program*

Crouthamel Cattle Co. works closely with Dr. Terry McCoy at the Animal Health Center in La Grande, OR to customize/execute a vaccination program that not only maximizes the efficiency and production of the cowherd, but more importantly develops these bulls with an end goal of providing a sound breeding tool that will transition to multiple environments without acclimation. These bulls have received the following protocol:

<b>BIRTH</b>	<b>BRANDING</b>	<b>PRE-WEANING</b>	<b>POST-WEANING</b>
Vision 8-Way Multimin	Vision 8-Way Vista Once Ivomec pour-on	7-Way w/ Haemophilus somnus Vista Once MultiMin + Naselgen Ivomec pour-on	Bovi-Shield Gold One-shot Haemophilus somnus Safe-Guard Oral Drench

**FALL BULL DEVELOPMENT:** Cows calve out on meadow aftermath in late October and November and then wintered on hay. They move to spring pasture in March and the calves are pre-conditioned and weaned the end of June. The calves are weaned on long hay and left on a hay-only diet until October 1st when they are sent to Top Cut to start on test. It would be very possible to have these fall bulls weighing a lot more and be over-conditioned, but we have followed a strict management program to get these bulls properly developed to be ready to see heavy use come spring turn out. By bringing them along rather slow, it makes for fit bulls that are fully developed while increasing their longevity by not having them over conditioned.

**SPRING BULL DEVELOPMENT:** Cows run on meadow aftermath/corn stalks/Alfalfa regrowth until two weeks prior to calving in January -February. The heavy cows are sorted off and calved in Touchet, WA. The cows are synced, bred, and turned to spring grass the end of March. The entire cowherd is summered on grass and mineral only (we do not believe in a creep feeder). September 1st the calves are weighed and weaned into a backgrounding lot at the ranch on nothing but long-stem hay for 45 days. This time period allows for us to get 3 rounds of shots in the bull calves and set up for the transition onto a high roughage development ration at Beus Feedlot, Pasco, WA to begin test by October 15th. Once again, we are aware that there are lots of management practices that would create 900-pound weaning weights and 1500-pound yearling weights but those are not the practices that we choose to develop range bulls on. These bulls have been developed slowly, have had all data turned in with correct contemporary groups that give us very meaningful and measurable weights and ratios to select and cull from.

**EMBRYO TRANSFER CALVES:** Our embryo transfer (ET) program has grown significantly over the past few years, due large in part to our partnerships with cooperator herds. These herds are diverse in both environment and management where a large percentage of these calves are "born outside" on native feed conditions to foothill/mountain terrains. We only mention this as you look at some of the data on the ET calves where there were weaning differences from those and our home raised calves. Also, there are some instances in the sale book with no BW information. This is due to the fact that there was simply no way to gather an accurate measurement on those individuals. As always, the numbers back from American Angus show ratios of 100 for all ET calves as they are born out of commercial recipient cows with varying breed make-up and genetics. These calves see the exact same CROUTHAMEL CATTLE VAC PROGRAM listed above as the entire set of home raised cattle.

**FEEDLOT DEVELOPMENT:** The bulls are developed at Beus Cattle Company in Pasco, WA. Brad does an excellent job not only keeping these cattle healthy but also getting them developed. There truly is a science to the development of bulls: they need to be brought along hard enough to see genetic differences in the cattle yet slow enough to allow us to turn out structurally sound bulls that will go to cow country and hold up. I have known Brad since college, and he has a highly trained crew of cowboys that manage and handle these bulls on a daily basis. The bulls have seen a high-forage diet with the goal of development at 3.2lbs./day. Bulls that return post-sale to the feedlot will see a strict low-maintenance diet until delivery.





**PARNELL  
DICKINSON**

P.O. Box 709 • Auburn, CA 95604

JOHN DICKINSON..... (916) 806-1919

JAKE PARNELL ..... (916) 662-1298

LUKE PARNELL ..... (805) 431-1267

info@parnelldickinson.com

ParnellDickinsonInc

www.ParnellDickinson.com

*It is our pleasure to welcome you to the Annual Crouthamel Cattle Co. Bull Sale.*

There is something to be said for staying the course. When I look through the 2026 offering the Crouthamel Family has worked hard to produce, I really begin to appreciate the diligence and determination that Cory set in place over 15 years ago when we first crossed paths. At the time he was expanding his cowherd and purchasing many older cows. One might think it was mainly to get a more affordable product due to their age, but the real reason was that those cows were proven and more predictable. They had already been through multiple sorts, jumped through all the hurdles of fertility, production, quality, temperament, etc. He brought them home and then challenged them again in his own local environment. They didn't all workout, but the ones that did have had a lasting impression on this program. When you flip through the following pages, you will start to see the same females popping up multiple times in the 2nd and 3rd columns of these pedigrees. You will realize the "ripple effect" those females have had and resulting consistency and predictability of these genetics.

We have had the opportunity to go through each of the bulls this winter, and the offering is stacked up nicely. If we can answer any questions about the bulls prior to sale, please don't hesitate to contact us. This year's spring yearlings are led off by sons of Crouthamel Copyright 2514, the high-selling bull from 2023 as well as his flush brother, Crouthamel Barricade 2545. The Copyright's were popular last year, and I think the powerful Blackbird 3068 donor is showing through in these two sons again this year. As always, there is a solid offering of Fall-born long yearling bulls featured in Lots 110-122. Then you also won't want to miss the Charolais offering featured in Lots 125-133. Cory and Shannon have grown this set of cattle very well, and I believe it to be our best Charolais offering yet.

The sale will be held at the Double M Sale Facility in Stanfield, OR, conveniently located along Interstate 84. The bulls are developed at Beus Cattle Co., just North of Pasco, WA. If you're passing through before the sale, feel free to stop in and look around. The bulls are located just a few miles off Highway 395. Look forward to seeing you at the Sale!

*- John Dickinson*

Lot Number

1

### CROUTHAMEL COPYRIGHT 5060

BD: 01/21/25 Reg #: 21460049 Tattoo: 5060

SITZ BARRICADE 632F  
**CROUTHAMEL COPYRIGHT 2514**  
CROUTHAMEL BLACKBIRD 7136

A A R OUTRIGHT 7516  
**CROUTHAMEL ERISKAY 0083**  
CROUTHAMEL ERISKAY 7081

#SITZ STELLAR 726D  
SITZ BARBARAMERE NELL 765D  
CROUTHAMEL GAME DAY 5045  
#CROUTHAMEL BLACKBIRD 3068  
#HAYNES OUTRIGHT 452  
#AAR COMANCHES PRINCESS 3532  
#S A V RESOURCE 1441  
#CCC ERISKAY 1538

BW	90
Adj 205	666
WW Ratio	95
Adj. 365	1045
YW Ratio	102
Dam's NR	3/94

Individual performance/ratios

Dam's Nursing Ratio

\$Value Indexes

Production EPDs

CED	BW	WW	YW	RADG	DOC	HP	CEM	Milk	Marb	RE	\$M	\$B	\$C
2	2.4	71	128	0.24	21	11.2	9	22	0.40	0.38	67	131	237

**Calving Ease Direct (CED)**, is expressed as a difference in percentage of unassisted births, with a higher value indicating greater calving ease in first-calf heifers. It predicts the average difference in ease with which a sire's calves will be born when he is bred to first-calf heifers.

**Birth Weight (BW)**, expressed in pounds, is a predictor of a sire's ability to transmit birth weight to his progeny compared to that of other sires.

**Weaning Weight (WW)**, expressed in pounds, is a predictor of a sire's ability to transmit weaning growth to his progeny compared to that of other sires.

**Yearling Weight (YW)**, expressed in pounds, is a predictor of a sire's ability to transmit yearling growth to his progeny compared to that of other sires..

**Residual Average Daily Gain (RADG)**, expressed in pounds per day, is a predictor of a sire's genetic ability for postweaning gain in future progeny compared to that of other sires, given a constant amount of feed consumed.

**Heifer Pregnancy (HP)**, is a selection tool to increase the probability or chance of a sire's daughters becoming pregnant as first-calf heifers during a normal breeding season. A higher EPD is the more favorable direction and the EPD is reported in percentage units.

**Calving Ease Maternal (CEM)**, is expressed as a difference in percentage of unassisted births with a higher value indicating greater calving ease in first-calf daughters. It predicts the average ease with which a sire's daughters will calve as first-calf heifers when compared to daughters of other sires.

**Maternal Milk (Milk)**, is a predictor of a sire's genetic merit for milk and mothering ability as expressed in his daughters compared to daughters of other sires. In other words, it is that part of a calf's weaning weight attributed to milk and mothering ability.

**Marbling (Marb)**, is expressed as a fraction of the difference in USDA marbling score of a sire's progeny compared to progeny of other sires.

**Dolocity (DOC)**, expressed as a difference in yearling cattle temperament, with a higher value indicating more favorable dolocity. It predicts the average difference of progeny from a sire in comparison with another sire's calves. In herds where temperament problems are not an issue, this expected difference would not be realized.

**Ribeye Area (RE)**, expressed in square inches, is a predictor of the difference in ribeye area of a sire's progeny compared to progeny of other sires.

**Maternal Weaned Calf Value (\$M)**, an index, expressed in dollars per head, predicts profitability differences from conception to weaning with the underlying breeding objective assuming that individuals retain their own replacement females within herd and sell the rest of the cull female and all male progeny as feeder calves. The model assumes commercial producers will replace 25% of their breeding females in the first generation and 20% of their breeding females in each subsequent generation.

**Beef Value (\$B)**, a terminal index, expressed in dollars per carcass, to predict profitability differences in progeny due to genetics for postweaning and carcass traits. This terminal index assumes commercial producers wean all male and female progeny, retain ownership of these animals through the feedlot phase and market these animals on a carcass grid.

**Combined Value (\$C)**, an index, expressed in dollars per head, which includes all traits that make up both Maternal Weaned Calf Value (\$M) and Beef Value (\$B) with the objective that commercial producers will replace 20% of their breeding females per year with replacement heifers retained within their own herd. The remaining cull heifer and steer progeny are then assumed to be sent to the feedlot where the producers retain ownership of those cattle and sell them on a quality-based carcass merit grid.

# Crouthamel Copyright 2514

Copyright was the \$26,000 high-selling bull from our 2023 sale selected by Ox Bow Ranch and Botts Ranch in Montana. He was featured with 11 flush brothers that averaged over \$9,900 with three herdsires in the group going onto purebred programs. The Blackbird 3068 cow has been the most influential female in our program's history. She is one of the cows that works with every mating, and that is proven on her Pathfinder record where she has WR 8/112, YR 5/105, and has 69/102 for IMF and 69/102 for Ribeye. More importantly, she has more direct daughters producing in our herd than any other, and we have used four different sons in the program as well.

## HIS SONS SELL AS LOTS 1-6



1

### CROUTHAMEL COPYRIGHT 5060

BD: 01/21/25 Reg #: 21460049 Tattoo: 5060

SITZ BARRICADE 632F  
**CROUTHAMEL COPYRIGHT 2514**  
 CROUTHAMEL BLACKBIRD 7136

A A R OUTRIGHT 7516  
**CROUTHAMEL ERISKAY 0083**  
 CROUTHAMEL ERISKAY 7081

#SITZ STELLAR 726D  
 SITZ BARBARAMERE NELL 765D  
 CROUTHAMEL GAME DAY 5045  
 #CROUTHAMEL BLACKBIRD 3068  
 #HAYNES OUTRIGHT 452  
 #AAR COMANCHES PRINCESS 3532  
 #S A V RESOURCE 1441  
 #CCC ERISKAY 1538

BW	90
Adj 205	666
WW Ratio	95
Adj. 365	1045
YW Ratio	102
Dam's NR	
3/94	

ANGUS<sup>GS</sup>

CED	BW	WW	YW	RADG	DOC	HP	CEM	Milk	Marb	RE	\$M	\$B	\$C
2	2.4	71	128	0.24	21	11.2	9	22	0.40	0.38	67	131	237

This is a stout, square hipped and massive rib shape. This is one of the more attractive fronted Copyright sons, but he still carries the same mass and base when you get behind him. Granddam of this bull is a highly productive Resource daughter that records a Nursing Ratio of 6/105.

2

### CROUTHAMEL COPYRIGHT 5078

BD: 01/25/25 Reg #: 21460048 Tattoo: 5078

SITZ BARRICADE 632F  
**CROUTHAMEL COPYRIGHT 2514**  
 CROUTHAMEL BLACKBIRD 7136

CROUTHAMEL SOUTH DAKOTA 5510  
**CROUTHAMEL LUCY 0097**  
 #CCC LUCY 1076

#SITZ STELLAR 726D  
 SITZ BARBARAMERE NELL 765D  
 CROUTHAMEL GAME DAY 5045  
 #CROUTHAMEL BLACKBIRD 3068  
 #MOHNNEN SOUTH DAKOTA 402  
 SITZ RACHEL 13N  
 OCC BIG SKY 825  
 MVCC BASIN LUCY 1236

BW	83
Adj 205	631
WW Ratio	90
Adj. 365	964
YW Ratio	94
Dam's NR	
4/96	

ANGUS<sup>GS</sup>

CED	BW	WW	YW	RADG	DOC	HP	CEM	Milk	Marb	RE	\$M	\$B	\$C
4	1.9	67	116	0.20	16	8.3	4	28	0.74	0.58	60	155	261

Lots of cow power on both sides of the pedigree here. The granddam, Lucy 1076, is a Pathfinder female stuck first or second service every year and charts an incredible record with BR 9/102, WR 9/105, YW 9/101, and has ultrasound progeny of 9/109 for IMF and 9/103 for Ribeye.



1



Tremendous depth and length of body in this Copyright son that carries the #1 Adjusted 205-day weight in the offering. He ranks in the top 4% of the breed for WW EPD and comes from a productive and maternal oriented cow line. His granddam is Pathfinder with NR 8/105.



3

**3 CROUTHAMEL COPYRIGHT 5059**  
 BD: 01/21/25 Reg #: 21460006 Tattoo: 5059

BW	95
Adj 205	817
WW Ratio	117
Adj. 365	1150
YW Ratio	112
Dam's NR	
2/100	

SITZ BARRICADE 632F  
**CROUTHAMEL COPYRIGHT 2514**  
 CROUTHAMEL BLACKBIRD 7136

#CONNEALY SPUR  
**CROUTHAMEL EVERELDA 0528**  
 #CROUTHAMEL EVERELDA 2511

#SITZ STELLAR 726D  
 SITZ BARBARAMERE NELL 765D  
 CROUTHAMEL GAME DAY 5045  
 #CROUTHAMEL BLACKBIRD 3068  
 #CONNEALY STIMULUS 8419  
 #JAZZA OF CONANGA 8594  
 #CONNEALY RIGHT ANSWER 746  
 SITZ ERICA EVERELDA 2578

**4 CROUTHAMEL COPYRIGHT 5056**  
 BD: 01/21/25 Reg #: 21460047 Tattoo: 5056

BW	85
Adj 205	670
WW Ratio	96
Adj. 365	1009
YW Ratio	98
Dam's NR	
4/91	

SITZ BARRICADE 632F  
**CROUTHAMEL COPYRIGHT 2514**  
 CROUTHAMEL BLACKBIRD 7136

CROUTHAMEL EMULATION 7519  
**CROUTHAMEL PEARL 0214**  
 CROUTHAMEL LADY PEARL 7214

#SITZ STELLAR 726D  
 SITZ BARBARAMERE NELL 765D  
 CROUTHAMEL GAME DAY 5045  
 #CROUTHAMEL BLACKBIRD 3068  
 JVC EMULATION EXT V910  
 CCC MISSY 907  
 BLUEGRASS CHISUM 444  
 BONITA CC FINAL PRODUCT 1614

CED	BW	WW	YW	RADG	DOC	HP	CEM	Milk	Marb	RE	\$M	\$B	\$C
-6	6.0	92	148	0.21	21	9.8	5	20	0.22	0.57	61	134	235

CED	BW	WW	YW	RADG	DOC	HP	CEM	Milk	Marb	RE	\$M	\$B	\$C
-4	4.1	82	139	0.23	3	11.9	3	25	0.22	0.39	49	123	209



5056 is another example of what Copyright can do for added length, capacity, and muscle expression. Where this bull surpasses his sire are his advantages pattern and design. He's a tighter sheathed, cleaner fronted version of Barricade genetics that doesn't give up anything for mass and density.

4



Unique opportunity on this calving-ease Copyright son where he is double-bred to the 3068 donor that has had more impact on our program than any other female in the last 20+ years. He's also the #2 Marbling EPD bull in the entire sale.



5

### CROUTHAMEL COPYRIGHT 5097

BD: 01/30/25 Reg #: 21460046 Tattoo: 5097

SITZ BARRICADE 632F  
**CROUTHAMEL COPYRIGHT 2514**  
 CROUTHAMEL BLACKBIRD 7136

#CONNEALY SPUR  
**#CROUTHAMEL BLACKBIRD 0551**  
 #CROUTHAMEL BLACKBIRD 3068

#SITZ STELLAR 726D  
 SITZ BARBARAMERE NELL 765D  
 CROUTHAMEL GAME DAY 5045  
 #CROUTHAMEL BLACKBIRD 3068  
 #CONNEALY STIMULUS 8419  
 #JAZZA OF CONANGA 8594  
 MYTTY FOREFRONT 1135  
 CCC BLACKBIRD 1080

BW	84
Adj 205	705
WW Ratio	101
Adj. 365	1111
YW Ratio	108

Dam's NR	3/105
----------	-------

ANGUS CS

CED	BW	WW	YW	RADG	DOC	HP	CEM	Milk	Marb	RE	\$M	\$B	\$C
11	0.2	62	115	0.23	8	12.3	12	30	1.14	0.38	71	164	284

6

### CROUTHAMEL COPYRIGHT 5084

BD: 01/27/25 Reg #: 21460050 Tattoo: 5084

SITZ BARRICADE 632F  
**CROUTHAMEL COPYRIGHT 2514**  
 CROUTHAMEL BLACKBIRD 7136

JVC EMULATION EXT V910  
**CROUTHAMEL BURMERE 8573**  
 CCC MISSY 907

#SITZ STELLAR 726D  
 SITZ BARBARAMERE NELL 765D  
 CROUTHAMEL GAME DAY 5045  
 #CROUTHAMEL BLACKBIRD 3068  
 #N BAR EMULATION EXT  
 IDEAL 2434 OF 7407 7412  
 #CONNEALY PACKER 547  
 C C MISSY 704

BW	84
Adj 205	667
WW Ratio	95
Adj. 365	918
YW Ratio	89

Dam's NR	6/93
----------	------

ANGUS CS

CED	BW	WW	YW	RADG	DOC	HP	CEM	Milk	Marb	RE	\$M	\$B	\$C
4	0.7	54	94	0.18	17	8.9	11	27	0.57	0.13	89	114	237



7

### CROUTHAMEL BARRICADE 5231

BD: 02/27/25 Reg #: 21479493 Tattoo: 5231

SITZ BARRICADE 632F  
**CROUTHAMEL BARRICADE 2545**  
 CROUTHAMEL BLACKBIRD 7136

VISION CASH 3414  
**CROUTHAMEL BERNICE 8537**  
 CAMAS PRAIRIE K LADY 7507

#SITZ STELLAR 726D  
 SITZ BARBARAMERE NELL 765D  
 CROUTHAMEL GAME DAY 5045  
 #CROUTHAMEL BLACKBIRD 3068  
 #BARSTOW CASH  
 VISION MISS EMULOUS 111  
 #CONNEALY ONWARD  
 #KESSLERS LADY RAIN 4094

BW	92
Adj 205	680
WW Ratio	104
Adj. 365	
YW Ratio	

Dam's NR	6/95
----------	------

ANGUS CS

CED	BW	WW	YW	RADG	DOC	HP	CEM	Milk	Marb	RE	\$M	\$B	\$C
3	3.4	76	140	0.28	27	14.6	0	14	0.22	0.81	65	132	236



Another high performer with top-end growth that ranks in the top 10% of the breed for WW and YW EPD. Dam of this bull has been an excellent producer with a phenomenal record of 3/110 for weaning and is an own daughter of the 907 donor that put us on the map back in the day.



8

8

### CROUTHAMEL BARRICADE 5199

BD: 02/18/25 Reg #: 21460176 Tattoo: 5199

SITZ BARRICADE 632F  
**CROUTHAMEL BARRICADE 2545**  
 CROUTHAMEL BLACKBIRD 7136

#S A V SENSATION 5615  
**CROUTHAMEL BURMERE 9504**  
 CCC MISSY 907

#SITZ STELLAR 726D  
 SITZ BARBARAMERE NELL 765D  
 CROUTHAMEL GAME DAY 5045  
 #CROUTHAMEL BLACKBIRD 3068  
 #S A V REGISTRY 2831  
 S A V BLACKCAP MAY 4136  
 #CONNELLY PACKER 547  
 C C MISSY 704

BW	100
Adj 205	753
WW Ratio	107
Adj. 365	1153
YW Ratio	112
Dam's NR	
3/110	



CED	BW	WW	YW	RADG	DOC	HP	CEM	Milk	Marb	RE	\$M	\$B	\$C
-1	3.5	86	155	0.30	14	13.4	11	17	0.41	0.99	36	151	232

9

### CROUTHAMEL BARRICADE 5110

BD: 02/03/25 Reg #: 21460057 Tattoo: 5110

SITZ BARRICADE 632F  
**CROUTHAMEL BARRICADE 2545**  
 CROUTHAMEL BLACKBIRD 7136

#GDAR GAME DAY 449  
**CROUTHAMEL EISAEVERGREEN5561**  
 #MYTTY EISA EVERGREEN 58R

#SITZ STELLAR 726D  
 SITZ BARBARAMERE NELL 765D  
 CROUTHAMEL GAME DAY 5045  
 #CROUTHAMEL BLACKBIRD 3068  
 #BOYD NEW DAY 8005  
 #G D A R MISS WIX 474  
 #SITZ NEW DESIGN 458N  
 SITZ EISA EVERGREEN 1468

BW	83
Adj 205	702
WW Ratio	100
Adj. 365	1075
YW Ratio	104
Dam's NR	
9/97	



CED	BW	WW	YW	RADG	DOC	HP	CEM	Milk	Marb	RE	\$M	\$B	\$C
5	0.9	73	128	0.25	13	11.5	13	16	0.50	0.69	81	148	273



9

This Barricade 2545 son has tremendous internal capacity and base width. His dam is a proven Game Day daughter with a great record and out of a past donor that was Pathfinder here as well. When you factor in this bull's proven genetics, sound build, and easy-doing look – he's as problem free as they come.





10

**CROUTHAMEL BARRICADE 5012**

BD: 01/11/25 Reg #: 21459999 Tattoo: 5012

SITZ BARRICADE 632F  
**CROUTHAMEL BARRICADE 2545**  
 CROUTHAMEL BLACKBIRD 7136

BLUEGRASS CHISUM 444  
**CROUTHAMEL BLACKCAP 8174**  
 CROUTHAMEL BLACKCAP 5580

#SITZ STELLAR 726D  
 SITZ BARBARAMERE NELL 765D  
 CROUTHAMEL GAME DAY 5045  
 #CROUTHAMEL BLACKBIRD 3068  
 #S CHISUM 6175  
 #BLUEGRASS PRIMROSE LADY 907  
 MYTTY THUNDERSTRUCK  
 MYTTY BLACKCAP 87R

BW	90
Adj 205	761
WW Ratio	109
Adj. 365	1006
YW Ratio	98
Dam's NR	5/106

ANGUS GS  
Powered by Waggon Genetics

CED	BW	WW	YW	RADG	DOC	HP	CEM	Milk	Marb	RE	\$M	\$B	\$C
2	2.9	86	140	0.23	17	10.0	7	19	0.69	0.81	82	157	286

**CROUTHAMEL BARRICADE 5211**

BD: 02/22/25 Reg #: 21460250 Tattoo: 5211

SITZ BARRICADE 632F  
**CROUTHAMEL BARRICADE 2545**  
 CROUTHAMEL BLACKBIRD 7136

CROUTHAMEL FOREFRONT 5086  
**CROUTHAMEL PRIMROSE 8079**  
 CROUTHAMEL PRIMROSE 4076

#SITZ STELLAR 726D  
 SITZ BARBARAMERE NELL 765D  
 CROUTHAMEL GAME DAY 5045  
 #CROUTHAMEL BLACKBIRD 3068  
 MYTTY FOREFRONT 1135  
 CROUTHAMEL PRIMROSE 3044  
 CROUTHAMEL RIGHTANSWER 2528  
 CROUTHAMEL PRIMROSE 2077

BW	
Adj 205	698
WW Ratio	107
Adj. 365	1098
YW Ratio	108
Dam's NR	4/106

ANGUS GS  
Powered by Waggon Genetics

CED	BW	WW	YW	RADG	DOC	HP	CEM	Milk	Marb	RE	\$M	\$B	\$C
6	2.0	75	135	0.26	13	10.9	10	20	0.22	0.72	46	138	225

[ M1P ]



11





12

**12 CROUTHAMEL BARRICADE 5221**

BD: 02/25/25 Reg #: 21489955 Tattoo: 5221

SITZ BARRICADE 632F  
**CROUTHAMEL BARRICADE 2545**  
 CROUTHAMEL BLACKBIRD 7136  
 #CROUTHAMEL PROTOCOL 3022  
**CROUTHAMEL QUENNBEE 8029**  
 CCC QUENNBEE 1084

#SITZ STELLAR 726D  
 SITZ BARBARAMERE NELL 765D  
 CROUTHAMEL GAME DAY 5045  
 #CROUTHAMEL BLACKBIRD 3068  
 CCC MERRITT 030  
 #CCC LADY RAIN 932  
 MYTTY TRAVELER U365  
 CCC QUENNBEE 848

BW	89
Adj 205	726
WW Ratio	111
Adj. 365	
YW Ratio	
<b>Dam's NR</b>	
5/105	

ANGUSGS  
Powered by Angus Genetics

CED	BW	WW	YW	RADG	DOC	HP	CEM	Milk	Marb	RE	\$M	\$B	\$C
2	3.1	73	127	0.26	20	10.8	9	25	0.50	0.58	63	143	248

**13 CROUTHAMEL BARRICADE 5193**

BD: 02/18/25 Reg #: 21460231 Tattoo: 5193

SITZ BARRICADE 632F  
**CROUTHAMEL BARRICADE 2545**  
 CROUTHAMEL BLACKBIRD 7136  
 #HA PRIME CUT 4493  
**CROUTHAMEL ERISKAY 0557**  
 #CCC ERISKAY 1538

#SITZ STELLAR 726D  
 SITZ BARBARAMERE NELL 765D  
 CROUTHAMEL GAME DAY 5045  
 #CROUTHAMEL BLACKBIRD 3068  
 VERMILION SIRLOIN  
 HA MISS BLACKCAP 9127  
 #S A V NET WORTH 4200  
 #BRUSETT EXT ERISKAY 518

BW	83
Adj 205	683
WW Ratio	105
Adj. 365	1022
YW Ratio	101
<b>Dam's NR</b>	
4/101	

ANGUSGS  
Powered by Angus Genetics

CED	BW	WW	YW	RADG	DOC	HP	CEM	Milk	Marb	RE	\$M	\$B	\$C
4	0.9	62	116	0.27	6	10.5	8	27	0.52	0.65	37	151	233



13



# 14

## CROUTHAMEL BARRICADE 5251

BD: 03/04/25 Reg #: 21460271 Tattoo: 5251

SITZ BARRICADE 632F  
**CROUTHAMEL BARRICADE 2545**  
 CROUTHAMEL BLACKBIRD 7136

CCC MERRITT 030  
**CROUTHAMEL BLACKCAP 5575**  
 #SITZ BLACKCAP BARDOLIER 1068

#SITZ STELLAR 726D  
 SITZ BARBARAMERE NELL 765D  
 CROUTHAMEL GAME DAY 5045  
 #CROUTHAMEL BLACKBIRD 3068  
 #CONNELLY PACKER 547  
 MVCC GAR BANDO 1240  
 #D H D TRAVELER 6807  
 #SITZ BLACKCAP BARDOLIER 3198

<b>BW</b>	
Adj 205	693
<b>WW Ratio</b>	106
Adj. 365	
<b>YW Ratio</b>	
<b>Dam's NR</b>	
	9/103



CED	BW	WW	YW	RADG	DOC	HP	CEM	Milk	Marb	RE	\$M	\$B	\$C
5	1.1	69	117	0.20	11	10.5	7	30	0.10	0.51	65	104	200

# 15

## CROUTHAMEL BARRICADE 5263

BD: 03/08/25 Reg #: 21489954 Tattoo: 5263

SITZ BARRICADE 632F  
**CROUTHAMEL BARRICADE 2545**  
 CROUTHAMEL BLACKBIRD 7136

JVC EMULATION EXT V910  
**CROUTHAMEL BURMERE 9551**  
 C C MISSY 704

#SITZ STELLAR 726D  
 SITZ BARBARAMERE NELL 765D  
 CROUTHAMEL GAME DAY 5045  
 #CROUTHAMEL BLACKBIRD 3068  
 #N BAR EMULATION EXT  
 IDEAL 2434 OF 7407 7412  
 KG NEW DESIGN 878 4040  
 M V C C MISSY 1114

<b>BW</b>	88
Adj 205	667
<b>WW Ratio</b>	102
Adj. 365	
<b>YW Ratio</b>	
<b>Dam's NR</b>	
	5/101



CED	BW	WW	YW	RADG	DOC	HP	CEM	Milk	Marb	RE	\$M	\$B	\$C
1	3.1	70	121	0.24	11	11.8	6	22	0.50	0.53	65	149	258

### Sitz Barricade 632F

Whether you viewed BARRICADE as a yearling or at maturity, hardly anyone would argue that he was one of the highest capacity, wide based, thick ended, dense made sires in the breed. The following set of ET bulls below stacks this power with the Blackbird 3068 cow that has been the most influential female in our program's history. She is one of the cows that works with every mating, and that is proven on her record where she has WR 8/112, YR 5/105, and has 69/102 for IMF and 69/102 for Ribeye. More importantly, she has more direct daughters producing in our herd than any other and in our 2023 sale, a daughter by Game Day produced the lead flush of twelve Barricade sons that averaged over \$9,900 and included 3 herd bulls going on to purebred programs. Two of those sons (Copyright 2514 and Barricade 2545) sired lots 1-15 in this catalog.

**HIS SONS SELL AS LOTS 16-20.**



# 16

## CROUTHAMEL BARRICADE 5516

BD: 02/12/25 Reg #: 21471534 Tattoo: 5516



<b>BW</b>	88	<b>Adj. 205</b>	655	<b>WW Ratio</b>	ET	<b>Adj. 365</b>	1028	<b>YW Ratio</b>	ET	<b>Dam's NR</b>	9/112		
CED	BW	WW	YW	RADG	DOC	HP	CEM	Milk	Marb	RE	\$M	\$B	\$C
4	2.0	71	125	0.22	13	12.6	5	26	0.60	0.39	67	155	268

# 19

## CROUTHAMEL BARRICADE 5535

BD: 02/18/25 Reg #: 21471537 Tattoo: 5535



<b>BW</b>	92	<b>Adj. 205</b>	708	<b>WW Ratio</b>	ET	<b>Adj. 365</b>	1087	<b>YW Ratio</b>	ET	<b>Dam's NR</b>	9/112		
CED	BW	WW	YW	RADG	DOC	HP	CEM	Milk	Marb	RE	\$M	\$B	\$C
6	1.4	78	132	0.21	20	10.3	3	35	0.45	0.48	65	141	248

# 17

## CROUTHAMEL BARRICADE 5524

BD: 02/15/25 Reg #: 21471535 Tattoo: 5524



<b>BW</b>	79	<b>Adj. 205</b>	627	<b>WW Ratio</b>	ET	<b>Adj. 365</b>	987	<b>YW Ratio</b>	ET	<b>Dam's NR</b>	9/112		
CED	BW	WW	YW	RADG	DOC	HP	CEM	Milk	Marb	RE	\$M	\$B	\$C
4	2.0	71	125	0.22	13	12.6	5	26	0.60	0.39	67	155	268

# 20

## CROUTHAMEL BARRICADE 5524

BD: 02/25/25 Reg #: 628366779 Tattoo: 5224

#SITZ STELLAR 726D  
**SITZ BARRICADE 632F**  
 SITZ BARBARAMERE NELL 765D

MYTTY FOREFRONT 1135  
**#CROUTHAMEL BLACKBIRD 3068**  
 CCC BLACKBIRD 1080

#MOHNNEN SUBSTANTIAL 272  
 SITZ PRIDE 200B  
 SITZ SUPERIOR 10971  
 SITZ BARBARAMERE NELL 73T  
 MYTTY FOREFRONT 66W  
 MYTTY BLACK LADY W320  
 MYTTY EMBLAZON U376  
 CCC BLACKBIRD 971

<b>BW</b>	83
Adj 205	743
<b>WW Ratio</b>	114
Adj. 365	
<b>YW Ratio</b>	
<b>Dam's NR</b>	
	9/112



CED	BW	WW	YW	RADG	DOC	HP	CEM	Milk	Marb	RE	\$M	\$B	\$C
4	2.0	71	125	0.22	13	12.6	5	26	0.60	0.39	67	155	268

# 18

## CROUTHAMEL BARRICADE 5525

BD: 02/15/25 Reg #: 21471536 Tattoo: 5525



<b>BW</b>	85	<b>Adj. 205</b>	598	<b>WW Ratio</b>	ET	<b>Adj. 365</b>	944	<b>YW Ratio</b>	ET	<b>Dam's NR</b>	9/112		
CED	BW	WW	YW	RADG	DOC	HP	CEM	Milk	Marb	RE	\$M	\$B	\$C
7	-0.3	58	102	0.16	22	12.2	8	34	0.61	0.19	77	108	217





21

**21 CROUTHAMEL PROLIFIC 5053**

BD: 01/21/25 Reg #: 21464052 Tattoo: 5053

ELLINGSON PROFOUND 8155  
**ELLINGSON PROLIFIC**  
 #EA QUEEN 8070  
  
 #PRAIRIE PRIDE NEXT STEP 2036  
**CROUTHAMEL EVERELDA 0001**  
 CROUTHAMEL EVERELDA 5574

#S POWERPOINT WS 5503  
 #EA ROSETTA 6157  
 #KOU PAL JUNE AU 797  
 EA QUEEN 2350  
 #SYDGEN 928 DESTINATION 5420  
 FLYING V MISS PRIDE 426  
 CCC MERRITT 030  
 SITZ ERICA EVERELDA 2578

BW	90
Adj 205	657
WW Ratio	94
Adj. 365	1078
YW Ratio	105
<b>Dam's NR</b>	
4/102	

ANGUS<sup>GS</sup>

CED	BW	WW	YW	RADG	DOC	HP	CEM	Milk	Marb	RE	\$M	\$B	\$C
2	3.0	83	144	0.24	14	12.6	11	31	0.49	0.85	94	159	300

**23 CROUTHAMEL THREE RIVERS 5509**

BD: 01/27/25 Reg #: 21471531 Tattoo: 5509

#ELLINGSON HOMESTEAD 6030  
**ELLINGSON THREE RIVERS 8062**  
 EA EMBLYNETTE 6279  
  
 CROUTHAMEL GAME DAY 5045  
**CROUTHAMEL BLACKBIRD 7136**  
 #CROUTHAMEL BLACKBIRD 3068

#CTS REMEDY 1T01  
 EA ERICA 1082  
 #ELLINGSON CHAPS 4095  
 #EA EMBLYNETTE 2159  
 #GDAR GAME DAY 449  
 CROUTHAMEL BLACKCAP 3503  
 MYTTY FOREFRONT 1135  
 CCC BLACKBIRD 1080

BW	86
Adj 205	644
WW Ratio	ET
Adj. 365	1010
YW Ratio	ET
<b>Dam's NR</b>	
4/105	

ANGUS<sup>GS</sup>

CED	BW	WW	YW	RADG	DOC	HP	CEM	Milk	Marb	RE	\$M	\$B	\$C
-2	3.9	87	154	0.28	10	12.3	8	28	0.77	0.53	60	177	290

**22 CROUTHAMEL PROLIFIC 5092**

BD: 01/29/25 Reg #: 21464049 Tattoo: 5092

ELLINGSON PROFOUND 8155  
**ELLINGSON PROLIFIC**  
 #EA QUEEN 8070  
  
 #S POWERPOINT WS 5503  
**CROUTHAMEL BLACKBIRD 1560**  
 #CROUTHAMEL BLACKBIRD 3068

#S POWERPOINT WS 5503  
 #EA ROSETTA 6157  
 #KOU PAL JUNE AU 797  
 EA QUEEN 2350  
 TEHAMA REVERSE  
 S QUEEN ESSA 248  
 MYTTY FOREFRONT 1135  
 CCC BLACKBIRD 1080

BW	86
Adj 205	658
WW Ratio	94
Adj. 365	1112
YW Ratio	108
<b>Dam's NR</b>	
3/94	

ANGUS<sup>GS</sup>

CED	BW	WW	YW	RADG	DOC	HP	CEM	Milk	Marb	RE	\$M	\$B	\$C
-1	4.7	93	168	0.30	12	17.0	8	23	0.69	0.68	52	196	306

**24 CROUTHAMEL THREE RIVERS 5508**

BD: 01/26/25 Reg #: 21471530 Tattoo: 5505

#ELLINGSON HOMESTEAD 6030  
**ELLINGSON THREE RIVERS 8062**  
 EA EMBLYNETTE 6279  
  
 CROUTHAMEL GAME DAY 5045  
**CROUTHAMEL BLACKBIRD 7136**  
 #CROUTHAMEL BLACKBIRD 3068

#CTS REMEDY 1T01  
 EA ERICA 1082  
 #ELLINGSON CHAPS 4095  
 #EA EMBLYNETTE 2159  
 #GDAR GAME DAY 449  
 CROUTHAMEL BLACKCAP 3503  
 MYTTY FOREFRONT 1135  
 CCC BLACKBIRD 1080

BW	88
Adj 205	619
WW Ratio	ET
Adj. 365	965
YW Ratio	ET
<b>Dam's NR</b>	
4/105	

ANGUS<sup>GS</sup>

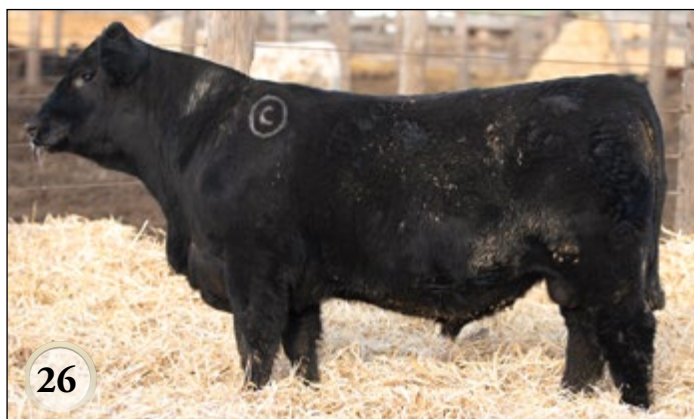
CED	BW	WW	YW	RADG	DOC	HP	CEM	Milk	Marb	RE	\$M	\$B	\$C
-2	3.2	74	138	0.27	-1	13.6	10	32	0.86	0.26	57	158	262



## B Bar Black Mass 3045

BLACK MASS was our outcross selection in 2024 for added calving ease that maintained our standards for proven maternal lines with documented performance and production. He is an aged sire at Lunds B Bar Angus program in Montana where he still sees natural service at 10 years of age and great structure and foot quality. There is over 50 daughters in production indexing 102 and his dam and granddam are two of the top females in their program's history. We're excited to mix this kind of consistency into our program here, and love the opportunity of an outcross for both ourselves and our customers to have more options.

**HIS SONS AND GRANDSONS SELL AS LOTS 25-32**



### 25 CROUTHAMEL BLACK MASS 5003

BD: 01/06/25 Reg #: 21466592 Tattoo: 5003

B BAR WINDY 79  
**#B BAR BLACK MASS 3045**  
 #B BAR QUEEN 304

CROUTHAMEL TAHOE 0006  
**CROUTHAMEL BLACKBIRD 3143**  
 CROUTHAMEL BLACKBIRD 4023

#CROOK MT REALLY WINDY 141  
 #B BAR LADY JEWEL 116  
 SITZ RLS ALLIANCE 7164  
 #B BAR QUEEN 557  
 #TEHAMA TAHOE B767  
 #CROUTHAMEL BLACKBIRD 8008  
 #SITZ UPWARD 307R  
 CCC BLACKBIRD 971

BW	71
Adj 205	705
WW Ratio	110
Adj. 365	1017
YW Ratio	106

Dam's NR	1/110
----------	-------

ANGUS GS  
Powered by Wageningen BioGenetic Centre

CED	BW	WW	YW	RADG	DOC	HP	CEM	Milk	Marb	RE	\$M	\$B	\$C
8	-0.2	59	106	0.27	29	11.6	7	33	-0.14	0.85	72	107	211

### 26 CROUTHAMEL BLACK MASS 5021

BD: 01/14/25 Reg #: 21466591 Tattoo: 5021

B BAR WINDY 79  
**#B BAR BLACK MASS 3045**  
 #B BAR QUEEN 304

LT REVERED  
**CROUTHAMEL BLACKBIRDMERE3027**  
 CROUTHAMEL BLACKBIRDMERE8514

#CROOK MT REALLY WINDY 141  
 #B BAR LADY JEWEL 116  
 SITZ RLS ALLIANCE 7164  
 #B BAR QUEEN 557  
 #BASIN RAINMAKER 4404  
 LT ASHLEY 7078  
 CCC MERRITT 030  
 CCC BLACKBIRDMERE 938

BW	82
Adj 205	629
WW Ratio	98
Adj. 365	1008
YW Ratio	105

Dam's NR	1/98
----------	------

ANGUS GS  
Powered by Wageningen BioGenetic Centre

CED	BW	WW	YW	RADG	DOC	HP	CEM	Milk	Marb	RE	\$M	\$B	\$C
5	1.5	59	113	0.28	25	12.5	8	30	0.40	0.78	79	148	271

### 27 CROUTHAMEL BLACK MASS 5028

BD: 01/16/25 Reg #: 21474540 Tattoo: 5028

B BAR WINDY 79  
**#B BAR BLACK MASS 3045**  
 #B BAR QUEEN 304

MUSGRAVE CRACKERJACK  
**CROUTHAMEL BERNICE 3104**  
 CROUTHAMEL BERNICE 1241

#CROOK MT REALLY WINDY 141  
 #B BAR LADY JEWEL 116  
 SITZ RLS ALLIANCE 7164  
 #B BAR QUEEN 557  
 #MUSGRAVE 316 STUNNER  
 MUSGRAVE RITO JET A649  
 CROUTHAMEL SOUTH DAKOTA 5522  
 CROUTHAMEL BERNICE 8577

BW	75
Adj 205	631
WW Ratio	98
Adj. 365	1025
YW Ratio	107

Dam's NR	1/98
----------	------

ANGUS GS  
Powered by Wageningen BioGenetic Centre

CED	BW	WW	YW	RADG	DOC	HP	CEM	Milk	Marb	RE	\$M	\$B	\$C
7	1.1	65	104	0.21	23	9.8	7	31	0.03	1.06	89	127	254





### 28 CROUTHAMEL BLACK MASS 5006

BD: 01/07/25 Reg #: 21466708 Tattoo: 5006

B BAR WINDY 79  
**#B BAR BLACK MASS 3045**  
 #B BAR QUEEN 304

CROUTHAMEL RIGHT ANSWER 4010  
**CROUTHAMEL QUEEN LADY 6084**  
 CROUTHAMEL QUEEN LADY 4020

#CROOK MT REALLY WINDY 141  
 #B BAR LADY JEWEL 116  
 SITZ RLS ALLIANCE 7164  
 #B BAR QUEEN 557  
 #CONNEALY RIGHT ANSWER 746  
 #CROUTHAMEL COUNTESS 2025  
 BUFORD BLUESTEM 9974  
 VERMILION QUEEN LADY 1385

BW	83
Adj 205	754
WW Ratio	108
Adj. 365	1141
YW Ratio	111

Dam's NR	6/105
----------	-------

ANGUS<sup>GS</sup>  
Genetic Selection

CED	BW	WW	YW	RADG	DOC	HP	CEM	Milk	Marb	RE	\$M	\$B	\$C
10	-1.2	59	109	0.28	26	17.0	9	23	0.58	0.58	104	132	275

### 29 CROUTHAMEL BLACK MASS 5044

BD: 01/19/25 Reg #: 21466593 Tattoo: 5044

B BAR WINDY 79  
**#B BAR BLACK MASS 3045**  
 #B BAR QUEEN 304

CROUTHAMEL ORIGINAL 0524  
**CROUTHAMEL BLACKBIRD MERE3137**  
 CROUTHAMEL BLACKBIRD MERE9503

#CROOK MT REALLY WINDY 141  
 #B BAR LADY JEWEL 116  
 SITZ RLS ALLIANCE 7164  
 #B BAR QUEEN 557  
 #HA PRIME CUT 4493  
 #CROUTHAMEL BLACKBIRD 3068  
 #CROUTHAMEL PROTOCOL 3022  
 CCC BLACKBIRD MERE 938

BW	79
Adj 205	617
WW Ratio	96
Adj. 365	942
YW Ratio	98

Dam's NR	1/96
----------	------

ANGUS<sup>GS</sup>  
Genetic Selection

CED	BW	WW	YW	RADG	DOC	HP	CEM	Milk	Marb	RE	\$M	\$B	\$C
4	1.2	53	90	0.24	23	11.5	0	35	0.39	0.58	50	136	226



30

**CROUTHAMEL BLACK MASS 5075**

BD: 01/25/25 Reg #: 21480942 Tattoo: 5075

B BAR WINDY 79  
#B BAR BLACK MASS 3045  
#B BAR QUEEN 304

#CROOK MT REALLY WINDY 141  
#B BAR LADY JEWEL 116  
SITZ RLS ALLIANCE 7164  
#B BAR QUEEN 557  
#S A V RENOWN 3439  
CCC MISSY 907  
#CONNEALY SPUR  
#CROUTHAMEL BLACKBIRD 3068

BW	95
Adj 205	673
WW Ratio	105
Adj. 365	931
YW Ratio	97

Dam's NR	1/105
----------	-------

PACIFIC CATTLE RELEVANT 987  
**CROUTHAMEL BLACKBIRD 3186**  
#CROUTHAMEL BLACKBIRD 0551

ANGUS<sup>GS</sup>  
Powered by Waggon Genetics

CED	BW	WW	YW	RADG	DOC	HP	CEM	Milk	Marb	RE	\$M	\$B	\$C
2	1.3	64	108	0.19	23	14.0	1	33	0.44	0.84	96	135	271

33

**CROUTHAMEL JUSTIFIED 5002**

BD: 01/05/25 Reg #: 21459848 Tattoo: 5002

#KG JUSTIFIED 3023  
**LCC JUSTIFIED 272**  
LCC FROSTY 937

CONNEALY JUDGMENT  
KG MISS MAGIC 1443  
RIVERBEND 1682 E219  
LCC FROSTY 743A  
#HA PRIME CUT 4493  
#CROUTHAMEL BLACKBIRD 3068  
#S A V REGISTRY 2831  
CCC BLACKBIRD MERE 938

BW	75
Adj 205	721
WW Ratio	112
Adj. 365	972
YW Ratio	101

Dam's NR	1/112
----------	-------

CROUTHAMEL ORIGINAL 0524  
**CROUTHAMEL BLACKBIRD MERE 2410**  
CROUTHAMEL BLACKBIRD MERE 7578

ANGUS<sup>GS</sup>  
Powered by Waggon Genetics

CED	BW	WW	YW	RADG	DOC	HP	CEM	Milk	Marb	RE	\$M	\$B	\$C
12	-2.0	69	117	0.24	17	12.3	10	40	0.29	0.60	88	130	257

[ OHP ]

31

**CROUTHAMEL BLACK MASS 5273**

BD: 03/10/25 Reg #: 21459979 Tattoo: 5273

#B BAR BLACK MASS 3045  
**KA BLACK MASS 093**  
KA HAZEL 2179

B BAR WINDY 79  
#B BAR QUEEN 304  
VDAR MANHATTAN 1379  
#KA HAZEL 1825  
#SITZ STELLAR 726D  
SITZ BARBARAMERE NELL 765D  
#CONNEALY PACKER 547  
CROUTHAMEL BARBARA 2071

BW	80
Adj 205	688
WW Ratio	104
Adj. 365	
YW Ratio	

Dam's NR	1/104
----------	-------

SITZ BARRICADE 632F  
**CROUTHAMEL BARBARA 2042**  
#CROUTHAMEL BARBARA 4022

ANGUS<sup>GS</sup>  
Powered by Waggon Genetics

CED	BW	WW	YW	RADG	DOC	HP	CEM	Milk	Marb	RE	\$M	\$B	\$C
2	1.3	85	146	0.28	21	14.0	5	33	0.39	0.85	72	176	300

34

**CROUTHAMEL JUSTIFIED 5176**

BD: 02/14/25 Reg #: 21479490 Tattoo: 5176

#KG JUSTIFIED 3023  
**LCC JUSTIFIED 272**  
LCC FROSTY 937

CONNEALY JUDGMENT  
KG MISS MAGIC 1443  
RIVERBEND 1682 E219  
LCC FROSTY 743A  
#BASIN RAINMAKER 4404  
LT ASHLEY 7078  
CCC MERRITT 030  
CCC BLACKBIRD MERE 938

BW	80
Adj 205	737
WW Ratio	115
Adj. 365	1070
YW Ratio	112

Dam's NR	1/115
----------	-------

LT REVERED  
**CROUTHAMEL BLACKBIRD MERE 3042**  
CROUTHAMEL BLACKBIRD MERE 8517

ANGUS<sup>GS</sup>  
Powered by Waggon Genetics

CED	BW	WW	YW	RADG	DOC	HP	CEM	Milk	Marb	RE	\$M	\$B	\$C
3	1.9	89	152	0.27	17	14.9	11	29	1.26	0.29	77	161	286

[ OHP ]

32

**CROUTHAMEL BLACK MASS 5287**

BD: 03/14/25 Reg #: 21459984 Tattoo: 5287

#B BAR BLACK MASS 3045  
**KA BLACK MASS 093**  
KA HAZEL 2179

B BAR WINDY 79  
#B BAR QUEEN 304  
VDAR MANHATTAN 1379  
#KA HAZEL 1825  
#SITZ STELLAR 726D  
SITZ BARBARAMERE NELL 765D  
#CROUTHAMEL PROTOCOL 3022  
C C MISSY 704

BW	79
Adj 205	716
WW Ratio	108
Adj. 365	
YW Ratio	

Dam's NR	2/110
----------	-------

SITZ BARRICADE 632F  
**CROUTHAMEL BURMERE 2010**  
CROUTHAMEL BURMERE 7521

ANGUS<sup>GS</sup>  
Powered by Waggon Genetics

CED	BW	WW	YW	RADG	DOC	HP	CEM	Milk	Marb	RE	\$M	\$B	\$C
8	-0.4	71	110	0.18	17	13.5	8	24	0.44	0.32	78	105	214

35

**CROUTHAMEL JUSTIFIED 5161**

BD: 02/12/25 Reg #: 21479489 Tattoo: 5161

#KG JUSTIFIED 3023  
**LCC JUSTIFIED 272**  
LCC FROSTY 937

CONNEALY JUDGMENT  
KG MISS MAGIC 1443  
RIVERBEND 1682 E219  
LCC FROSTY 743A  
JVC EMULATION EXT V910  
CCC MISSY 907  
#CONNEALY PACKER 547  
MVCC GAR BANDO 1240

BW	71
Adj 205	655
WW Ratio	102
Adj. 365	1007
YW Ratio	105

Dam's NR	1/102
----------	-------

CROUTHAMEL EMULATION 7519  
**CROUTHAMEL QUEENIE 3228**  
CROUTHAMEL QUEENIE 6563

ANGUS<sup>GS</sup>  
Powered by Waggon Genetics

CED	BW	WW	YW	RADG	DOC	HP	CEM	Milk	Marb	RE	\$M	\$B	\$C
16	-1.0	64	107	0.19	9	10.1	14	36	0.74	0.09	69	108	209

[ OHP ]

*LCC Justified 272*

JUSTIFIED 272 was the Lot 1 bull from the 2023 Lufkin Sale in Salmon, ID that has excellent calving-ease with a CED/BW combination inside the top 5% of the breed but maintains a top 25% yearling weight EPD as well. The first sons last year did not disappoint, and you can see the ratios in this year's bulls are dominant as well. We appreciate the power and mass the bull exhibits and love the fact that he's also in the top third of the breed for Marbling and Docility EPD.

**HIS SONS SELL AS LOTS 33-35**





36

36

**CROUTHAMEL FAIR-N-SQUARE5054**

BD: 01/21/25 Reg #: 21463786 Tattoo: 5054

#WOODHILL BLUEPRINT  
**MYERS FAIR-N-SQUARE M39**  
 MYERS MISS BEAUTY M136  
  
 #CROUTHAMEL PROTOCOL 3022  
**CROUTHAMEL BLACKBIRD 7042**  
 CCC QUENNBEE 1084

#CONNEALY CONFIDENCE PLUS  
 WOODHILL EVERGREEN Z291-B233  
 #CONNEALY THUNDER  
 #MYERS MISS BEAUTY M476  
 CCC MERRITT 030  
 #CCC LADY RAIN 932  
 MYTTY TRAVELER U365  
 CCC QUENNBEE 848

BW	96
Adj 205	721
WW Ratio	103
Adj. 365	1094
YW Ratio	106
Dam's NR	
5/100	

ANGUS GS

CED	BW	WW	YW	RADG	DOC	HP	CEM	Milk	Marb	RE	\$M	\$B	\$C
0	3.5	72	133	0.29	23	12.9	6	28	0.64	0.69	62	164	275

37

**CROUTHAMEL FAIR-N-SQUARE5071**

BD: 01/24/25 Reg #: 21463778 Tattoo: 5071

#WOODHILL BLUEPRINT  
**MYERS FAIR-N-SQUARE M39**  
 MYERS MISS BEAUTY M136

#CONNEALY CONFIDENCE PLUS  
 WOODHILL EVERGREEN Z291-B233  
 #CONNEALY THUNDER  
 #MYERS MISS BEAUTY M476  
 JVC EMULATION EXT V910  
 CCC MISSY 907  
 MYTTY TRAVELER U365  
 CCC QUENNBEE 848

CROUTHAMEL EMULATION 7519  
**CROUTHAMEL QUENNBEE 9185**  
 CCC QUENNBEE 1084

BW	94
Adj 205	750
WW Ratio	107
Adj. 365	1048
YW Ratio	102
Dam's NR	
4/100	

ANGUS GS

CED	BW	WW	YW	RADG	DOC	HP	CEM	Milk	Marb	RE	\$M	\$B	\$C
5	0.5	68	117	0.26	13	11.7	7	26	0.97	0.52	55	156	257



37





38

### 38 CROUTHAMEL FAIR-N-SQUARE5072

BD: 01/21/25 Reg #: 21463798 Tattoo: 5072

#WOODHILL BLUEPRINT  
**MYERS FAIR-N-SQUARE M39**  
 MYERS MISS BEAUTY M136

#CONNEALY PACKER 547  
**CROUTHAMEL RACHEL 6512**  
 SITZ RACHEL 13N

#CONNEALY CONFIDENCE PLUS  
 WOODHILL EVERGREEN Z291-B233  
 #CONNEALY THUNDER  
 #MYERS MISS BEAUTY M476  
 #FELTONS MEAT PACKER 62  
 BESTRELLE OF CONANGA 539  
 #O C C GREAT PLAINS 943G  
 SITZ RACHEL 96L

BW	90
Adj 205	680
WW Ratio	97
Adj. 365	1005
YW Ratio	98
Dam's NR	
6/96	

ANGUS Genetic Services

CED	BW	WW	YW	RADG	DOC	HP	CEM	Milk	Marb	RE	\$M	\$B	\$C
14	-0.2	64	111	0.24	15	10.9	10	26	0.65	0.54	80	137	258

39

### 39 CROUTHAMEL FAIR-N-SQUARE5152

BD: 02/11/25 Reg #: 21460139 Tattoo: 5152

MYERS FAIR-N-SQUARE M39  
**RR FAIR-N-SQUARE 3005**  
 ROLLIN ROCK EMMA 9002

MUSGRAVE CRACKERJACK  
**CROUTHAMEL COUNTESS 1064**  
 CROUTHAMEL COUNTESS 9211

#WOODHILL BLUEPRINT  
 MYERS MISS BEAUTY M136  
 SITZ DEMAND 730D  
 ROLLIN ROCK EMMA 7158  
 #MUSGRAVE 316 STUNNER  
 MUSGRAVE RITO JET A649  
 A A R OUTRIGHT 7516  
 CLC PISTOL 650

BW	79
Adj 205	688
WW Ratio	98
Adj. 365	939
YW Ratio	91
Dam's NR	
3/99	

ANGUS Genetic Services

CED	BW	WW	YW	RADG	DOC	HP	CEM	Milk	Marb	RE	\$M	\$B	\$C
11	-1.3	73	119	0.23	16	13.4	5	26	0.28	0.77	76	113	223

## Myers Fair-N-Square M39

We have used FAIR-N-SQUARE for a number of years with great success. They add muscle and body while maintaining foot quality with an attractive look and balance. He stems from a proven cow family that runs deep in fertility and longevity for the Myers program in Kentucky, and the bottom side of his pedigree has 2 Pathfinders in the first 3 females. We doubled down in 2024 and purchased two FAIR-N-SQUARE sons from Rollin Rock to get more of this blood in our program, and these progeny look to do the same things as their sire with a more disciplined frame size and perhaps even more muscle shape and body to them.

**HIS SONS AND GRANDSONS SELL AS LOTS 36-45**





40

40

**CROUTHAMEL FAIR-N-SQUARE5125**

BD: 02/06/25 Reg #: 21460078 Tattoo: 5125

MYERS FAIR-N-SQUARE M39  
**RR FAIR-N-SQUARE 3005**  
 ROLLIN ROCK EMMA 9002

#CONNEALY SPUR  
**CROUTHAMEL EVERELDA 0533**  
 #CROUTHAMEL EVERELDA 2511

#WOODHILL BLUEPRINT  
 MYERS MISS BEAUTY M136  
 SITZ DEMAND 730D  
 ROLLIN ROCK EMMA 7158  
 #CONNEALY STIMULUS 8419  
 #JAZZA OF CONANGA 8594  
 #CONNEALY RIGHT ANSWER 746  
 SITZ ERICA EVERELDA 2578

BW	77
Adj 205	797
WW Ratio	114
Adj. 365	1103
YW Ratio	107
Dam's NR	
2/100	



CED	BW	WW	YW	RADG	DOC	HP	CEM	Milk	Marb	RE	\$M	\$B	\$C
7	2.1	75	125	0.22	24	12.5	9	30	0.25	0.63	86	108	226

41

**CROUTHAMEL FAIR-N-SQUARE5240**

BD: 02/25/25 Reg #: 21460265 Tattoo: 5240

MYERS FAIR-N-SQUARE M39  
**RR FAIR-N-SQUARE 3005**  
 ROLLIN ROCK EMMA 9002

MUSGRAVE CRACKERJACK  
**CROUTHAMEL BURMERE 1032**  
 CROUTHAMEL BURMERE 9149

#WOODHILL BLUEPRINT  
 MYERS MISS BEAUTY M136  
 SITZ DEMAND 730D  
 ROLLIN ROCK EMMA 7158  
 #MUSGRAVE 316 STUNNER  
 MUSGRAVE RITO JET A649  
 CROUTHAMEL GAME DAY 5045  
 CROUTHAMEL BURMERE 7517

BW	79
Adj 205	772
WW Ratio	118
Adj. 365	
YW Ratio	
Dam's NR	
3/112	



CED	BW	WW	YW	RADG	DOC	HP	CEM	Milk	Marb	RE	\$M	\$B	\$C
9	0.8	77	128	0.22	9	12.0	13	30	0.50	0.40	77	133	250



41





42

**CROUTHAMEL FAIR-N-SQUARE5205**

BD: 02/18/25 Reg #: 21460239 Tattoo: 5205

MYERS FAIR-N-SQUARE M39  
**RR FAIR-N-SQUARE 3005**  
 ROLLIN ROCK EMMA 9002

MUSGRAVE CRACKERJACK  
**CROUTHAMEL QUEENIE 1020**  
 CROUTHAMEL QUEENIE 9113

#WOODHILL BLUEPRINT  
 MYERS MISS BEAUTY M136  
 SITZ DEMAND 730D  
 ROLLIN ROCK EMMA 7158  
 #MUSGRAVE 316 STUNNER  
 MUSGRAVE RITO JET A649  
 BLUEGRASS CHISUM 444  
 CROUTHAMEL QUEENIE 3502

BW	83
Adj 205	723
WW Ratio	111
Adj. 365	1110
YW Ratio	109
Dam's NR	
3/109	

ANGUS GS

CED	BW	WW	YW	RADG	DOC	HP	CEM	Milk	Marb	RE	\$M	\$B	\$C
8	0.1	77	133	0.24	20	9.9	9	26	0.25	0.70	57	129	224

44

**CROUTHAMEL FAIR-N-SQUARE5230**

BD: 02/27/25 Reg #: 21460262 Tattoo: 5230

MYERS FAIR-N-SQUARE M39  
**RR FAIR-N-SQUARE 3005**  
 ROLLIN ROCK EMMA 9002

#CONNEALY SPUR  
**CROUTHAMEL BLACKBIRD 0547**  
 #CROUTHAMEL BLACKBIRD 3068

#WOODHILL BLUEPRINT  
 MYERS MISS BEAUTY M136  
 SITZ DEMAND 730D  
 ROLLIN ROCK EMMA 7158  
 #CONNEALY STIMULUS 8419  
 #JAZZA OF CONANGA 8594  
 MYTTY FOREFRONT 1135  
 CCC BLACKBIRD 1080

BW	86
Adj 205	732
WW Ratio	112
Adj. 365	
YW Ratio	
Dam's NR	
4/107	

ANGUS GS

CED	BW	WW	YW	RADG	DOC	HP	CEM	Milk	Marb	RE	\$M	\$B	\$C
9	1.7	75	134	0.26	23	12.9	12	32	0.25	0.40	86	119	240

43

**CROUTHAMEL FAIR-N-SQUARE5213**

BD: 02/24/25 Reg #: 21460186 Tattoo: 5213

MYERS FAIR-N-SQUARE M39  
**RR FAIR-N-SQUARE 3005**  
 ROLLIN ROCK EMMA 9002

CROUTHAMEL FOREFRONT 5086  
**CROUTHAMEL BAR MAID 1198**  
 CROUTHAMEL BAR MAID 3128

#WOODHILL BLUEPRINT  
 MYERS MISS BEAUTY M136  
 SITZ DEMAND 730D  
 ROLLIN ROCK EMMA 7158  
 MYTTY FOREFRONT 1135  
 CROUTHAMEL PRIMROSE 3044  
 MYTTY UPWARD 125X  
 MYTTY BAR MAID 105R

BW	80
Adj 205	672
WW Ratio	96
Adj. 365	
YW Ratio	
Dam's NR	
3/97	

ANGUS GS

CED	BW	WW	YW	RADG	DOC	HP	CEM	Milk	Marb	RE	\$M	\$B	\$C
3	-0.3	57	95	0.19	22	11.2	4	31	0.38	0.35	68	104	203

45

**CROUTHAMEL FAIR-N-SQUARE5127**

BD: 02/07/25 Reg #: 21460089 Tattoo: 5127

MYERS FAIR-N-SQUARE M39  
**RR FAIR-N-SQUARE 3097**  
 DIXIE ERICA OF RR 7303

A A R OUTRIGHT 7516  
**CROUTHAMEL COUNTESS 9211**  
 CLC PISTOL 650

#WOODHILL BLUEPRINT  
 MYERS MISS BEAUTY M136  
 SITZ DIVIDEND 649C  
 DIXIE ERICA OF RR 5407  
 #HAYNES OUTRIGHT 452  
 #AAR COMANCHES PRINCESS 3532  
 #O C C PAXTON 730P  
 CROUTHAMEL COUNTESS 4024

BW	78
Adj 205	635
WW Ratio	91
Adj. 365	981
YW Ratio	96
Dam's NR	
5/99	

ANGUS GS

CED	BW	WW	YW	RADG	DOC	HP	CEM	Milk	Marb	RE	\$M	\$B	\$C
11	-0.4	68	125	0.29	17	12.4	5	25	0.92	0.46	45	164	258

[M1P]



# *Balancing* **PERFORMANCE** **& MATERNAL** *Strength*

## **FOCUSED APPROACH**

We have spent over 25 years building a cowherd acclimated to the Pacific Northwest. It is very important to us that we run our cows in the most similar environment to our commercial customers. This has proven to be the only way we can ensure our bulls hold up and perform with longevity. We have sorted the bloodlines that work from those that did not. We then multiply those superior genetics with a targeted approach of stacking proven cow families backed by documented performance measurements in a whole herd reporting model. The maternal traits are very important to us as we have grown exponentially without adding more labor over the years. We do not tolerate bad udders, bad feet, or lack of mothering ability. However, performance is vital to our program, and we put tremendous selection pressure to find the ones that have it. We strive to give our customers as many weaned pounds as possible without additional input or environmental requirement, and that is where maintaining BALANCE becomes key for us.

## **PERFORMANCE IS MEASURED AND DOCUMENTED**

We have developed strong ties to both the commercial cow/calf and feeding sector of this industry, and consequently – we know firsthand the value and usefulness of actual measured performance. These bulls have been bred to work at all segments, and we have weighed and measured them for every trait. Everything that we can measure objectively is printed in this catalog as well as the lifetime production ratios of the cows.

## **USING KNOWLEDGE TO MITIGATE RISK**

Through the processes described above, we are able to identify a few superior individuals that happen to excel in every priority trait we are looking for. If their bloodline allows a cross we can use, we are not afraid to use them as a herdsire. The main reason for this is the knowledge of not only that bull, but the quality of his mother, his grandmother, and so on. This is extremely helpful for us, and the following pages are well represented with those bulls we believe in. Bulls we KNOW will work in our country and have the utmost BALANCE at both ends of the production system.



# S Armstrong

ARMSTRONG is another outcross for us this year that provides a low-birth, high-growth profile with an impressive EPD package across the board. He ranks in the top 5% for Docility, top 15% for Claw Set, top 4% for Foot Angle, and top 10% for Hairshed. He has excellent carcass traits to match, and his dam is a top producer at Spickler's in North Dakota that has earned Pathfinder recognition.

**HIS SONS SELL AS LOTS 46-52**



**46**

## CROUTHAMEL ARMSTRONG 5192

BD: 02/17/25 Reg #: 21490871 Tattoo: 5192

S ARCHITECT 9501  
**S ARMSTRONG**  
#S QUEEN ESSA 7149

CROUTHAMEL NEXT STEP 9007  
**CROUTHAMEL BLACKBIRD 3086**  
CROUTHAMEL BLACKBIRD 1075

SYDGEN BLUEPRINT  
S BLOSSOM 7514  
#S FOUNDATION 514  
S QUEEN ESSA 960  
#PRAIRIE PRIDE NEXT STEP 2036  
CROUTHAMEL BLACKCAP 3503  
#HA PRIME CUT 4493  
#CROUTHAMEL BLACKBIRD 6111

BW	76
Adj 205	645
WW Ratio	101
Adj. 365	1079
YW Ratio	113
Dam's NR	
1/101	

ANGUS GS  
Powered by Angus Genetics

CED	BW	WW	YW	RADG	DOC	HP	CEM	Milk	Marb	RE	\$M	\$B	\$C
1	1.4	79	134	0.22	26	13.5	6	30	0.86	0.85	103	161	312

**47**

## CROUTHAMEL ARMSTRONG 5027

BD: 01/16/25 Reg #: 21464001 Tattoo: 5027

S ARCHITECT 9501  
**S ARMSTRONG**  
#S QUEEN ESSA 7149

CROUTHAMEL NEXT STEP 9007  
**CROUTHAMEL QUEENIE 3198**  
CROUTHAMEL QUEENIE 1020

SYDGEN BLUEPRINT  
S BLOSSOM 7514  
#S FOUNDATION 514  
S QUEEN ESSA 960  
#PRAIRIE PRIDE NEXT STEP 2036  
CROUTHAMEL BLACKCAP 3503  
MUSGRAVE CRACKERJACK  
CROUTHAMEL QUEENIE 9113

BW	68
Adj 205	652
WW Ratio	102
Adj. 365	991
YW Ratio	104
Dam's NR	
1/102	

ANGUS GS  
Powered by Angus Genetics

CED	BW	WW	YW	RADG	DOC	HP	CEM	Milk	Marb	RE	\$M	\$B	\$C
6	1.2	84	139	0.21	22	12.9	12	33	0.71	0.42	91	153	289



**48**

## CROUTHAMEL ARMSTRONG 5214

BD: 02/24/25 Reg #: 21464000 Tattoo: 5214

S ARCHITECT 9501  
**S ARMSTRONG**  
#S QUEEN ESSA 7149

PACIFIC CATTLE RELEVANT 987  
**CROUTHAMEL RACHEL 3282**  
CROUTHAMEL RACHEL 0095

SYDGEN BLUEPRINT  
S BLOSSOM 7514  
#S FOUNDATION 514  
S QUEEN ESSA 960  
#S A V RENOWN 3439  
CCC MISSY 907  
#CROUTHAMEL PROTOCOL 3022  
CROUTHAMEL RACHEL 5516

BW	80
Adj 205	751
WW Ratio	100
Adj. 365	
YW Ratio	
Dam's NR	
1/100	

ANGUS GS  
Powered by Angus Genetics

CED	BW	WW	YW	RADG	DOC	HP	CEM	Milk	Marb	RE	\$M	\$B	\$C
4	2.3	88	150	0.24	26	11.8	10	27	0.71	0.84	78	175	305



**49**

## CROUTHAMEL ARMSTRONG 5049

BD: 01/19/25 Reg #: 21470061 Tattoo: 5049

S ARCHITECT 9501  
**S ARMSTRONG**  
#S QUEEN ESSA 7149

#TEHAMA TAHOE B767  
**CROUTHAMEL BLACKBIRD 3081**  
CROUTHAMEL BLACKBIRD 1559

SYDGEN BLUEPRINT  
S BLOSSOM 7514  
#S FOUNDATION 514  
S QUEEN ESSA 960  
TEHAMA UPWARD Y238  
TEHAMA MARY BLACKBIRD Y684  
#BARSTOW BANKROLL B73  
#CROUTHAMEL BLACKBIRD 3068

BW	75
Adj 205	585
WW Ratio	91
Adj. 365	972
YW Ratio	101
Dam's NR	
1/91	

ANGUS GS  
Powered by Angus Genetics

CED	BW	WW	YW	RADG	DOC	HP	CEM	Milk	Marb	RE	\$M	\$B	\$C
8	-0.7	67	121	0.25	34	12.2	10	35	1.00	0.67	91	182	327





50

**CROUTHAMEL ARMSTRONG 5011**

BD: 01/11/25 Reg #: 21463999 Tattoo: 5011

50

S ARCHITECT 9501  
**S ARMSTRONG**  
 #S QUEEN ESSA 7149

MYERS FAIR-N-SQUARE M39  
**CROUTHAMEL BLACKBIRD 3011**  
 #CROUTHAMEL BLACKBIRD 8008

SYDGEN BLUEPRINT  
 S BLOSSOM 7514  
 #S FOUNDATION 514  
 S QUEEN ESSA 960  
 #WOODHILL BLUEPRINT  
 MYERS MISS BEAUTY M136  
 #CROUTHAMEL PROTOCOL 3022  
 CROUTHAMEL BLACKBIRD 3508

BW	85
Adj 205	749
WW Ratio	117
Adj. 365	1095
YW Ratio	115
Dam's NR	
1/117	

ANGUS GS

CED	BW	WW	YW	RADG	DOC	HP	CEM	Milk	Marb	RE	\$M	\$B	\$C
0	2.6	96	156	0.25	35	12.6	4	27	0.17	1.03	84	151	280

**CROUTHAMEL ARMSTRONG 5047**

BD: 01/19/25 Reg #: 21470062 Tattoo: 5047

51

S ARCHITECT 9501  
**S ARMSTRONG**  
 #S QUEEN ESSA 7149

CROUTHAMEL INSTINCT 1103  
**CROUTHAMEL BLACKBIRD 3114**  
 CROUTHAMEL BLACKBIRD 8135

SYDGEN BLUEPRINT  
 S BLOSSOM 7514  
 #S FOUNDATION 514  
 S QUEEN ESSA 960  
 HAYTER RESOURCE E12  
 CROUTHAMEL BLACKBIRD 7128  
 JVC EMULATION EXT V910  
 CCC BLACKBIRD 971

BW	70
Adj 205	688
WW Ratio	107
Adj. 365	966
YW Ratio	101
Dam's NR	
1/107	

ANGUS GS

CED	BW	WW	YW	RADG	DOC	HP	CEM	Milk	Marb	RE	\$M	\$B	\$C
7	0.0	70	121	0.22	25	13.1	12	31	0.53	0.92	100	162	310



51



52

**CROUTHAMEL ARMSTRONG 5051**

BD: 01/20/25 Reg #: 21463998 Tattoo: 5051

S ARCHITECT 9501  
**S ARMSTRONG**  
 #S QUEEN ESSA 7149

LT REVERED  
**CROUTHAMEL PRIMROSE 3050**  
 CROUTHAMEL PRIMROSE 2077

SYDGEN BLUEPRINT  
 S BLOSSOM 7514  
 #S FOUNDATION 514  
 S QUEEN ESSA 960  
 #BASIN RAINMAKER 4404  
 LT ASHLEY 7078  
 ROCKING R RIMROCK 701  
 CCC FOREMAN 703

BW	77
Adj 205	569
WW Ratio	89
Adj. 365	929
YW Ratio	97
Dam's NR	
	1/89

ANGUS 365

CED	BW	WW	YW	RADG	DOC	HP	CEM	Milk	Marb	RE	\$M	\$B	\$C
14	-1.8	68	118	0.22	38	11.7	10	34	0.95	0.49	97	181	332



53

**CROUTHAMEL BEDROCK 5104**

BD: 02/02/25 Reg #: 21461912 Tattoo: 5104

ELLINGSON PROLIFIC  
**BOYD BEDROCK**  
 SITZ SHAUNA 220H

#CROUTHAMEL PROTOCOL 3022  
**CROUTHAMEL BARBARAMERE 9089**  
 CCC BARBARAMERE JET 8523

ELLINGSON PROFOUND 8155  
 #EA QUEEN 8070  
 #SITZ ACCOMPLISHMENT 720F  
 SITZ SHAUNA 72E  
 CCC MERRITT Q30  
 #CCC LADY RAIN 932  
 #CONNEALY ONWARD  
 #SITZ BARBARAMERE JET 1777

BW	82
Adj 205	624
WW Ratio	96
Adj. 365	1024
YW Ratio	101
Dam's NR	
	3/100

ANGUS 365

CED	BW	WW	YW	RADG	DOC	HP	CEM	Milk	Marb	RE	\$M	\$B	\$C
1	2.7	75	136	0.28	27	12.7	9	22	0.79	0.72	67	175	294

54

**CROUTHAMEL PAYWEIGHT 5076**

BD: 01/25/25 Reg #: 21479482 Tattoo: 5076

#BASIN PAYWEIGHT 1682  
**PACIFIC CATTLE MR 1119**  
 PACIFIC CATTLE MISS 529

CROUTHAMEL TAHOE 0006  
**CROUTHAMEL BARBARAMERE 3047**  
 CROUTHAMEL BARBARAMERE 7010

#BASIN PAYWEIGHT 006S  
 21AR O LASS 7017  
 #SITZ WISDOM 481T  
 TW MISS 9950  
 #TEHAMA TAHOE B767  
 #CROUTHAMEL BLACKBIRD 8008  
 #KG JUSTIFIED 3023  
 CROUTHAMEL BARBARAMERE 5061

BW	78
Adj 205	690
WW Ratio	108
Adj. 365	1036
YW Ratio	109
Dam's NR	
	1/108

ANGUS 365

CED	BW	WW	YW	RADG	DOC	HP	CEM	Milk	Marb	RE	\$M	\$B	\$C
6	0.5	76	134	0.30	16	15.8	6	35	0.38	0.62	97	144	284



55

**CROUTHAMEL PAYWEIGHT 5074**

BD: 01/24/25 Reg #: 21479481 Tattoo: 5074

#BASIN PAYWEIGHT 1682  
**PACIFIC CATTLE MR 1119**  
 PACIFIC CATTLE MISS 529

CROUTHAMEL TAHOE 0006  
**CROUTHAMEL BLACKBIRDMERE3149**  
 CROUTHAMEL BLACKBIRDMERE6561

#BASIN PAYWEIGHT 006S  
 21AR O LASS 7017  
 #SITZ WISDOM 481T  
 TW MISS 9950  
 #TEHAMA TAHOE B767  
 #CROUTHAMEL BLACKBIRD 8008  
 #LEACHMAN RIGHT TIME  
 S A V BLACKBIRDMERE 6298

BW	79
Adj 205	638
WW Ratio	100
Adj. 365	971
YW Ratio	102
Dam's NR	
	1/100

ANGUS 365

CED	BW	WW	YW	RADG	DOC	HP	CEM	Milk	Marb	RE	\$M	\$B	\$C
8	1.8	59	105	0.28	14	9.1	15	34	0.36	0.21	81	117	233

56

**CROUTHAMEL PAYWEIGHT 5123**

BD: 02/06/25 Reg #: 21479485 Tattoo: 5123

#BASIN PAYWEIGHT 1682  
**PACIFIC CATTLE MR 1119**  
 PACIFIC CATTLE MISS 529

CROUTHAMEL TAHOE 0006  
**CROUTHAMEL BERNICE 3094**  
 CROUTHAMEL BERNICE 8577

#BASIN PAYWEIGHT 006S  
 21AR O LASS 7017  
 #SITZ WISDOM 481T  
 TW MISS 9950  
 #TEHAMA TAHOE B767  
 #CROUTHAMEL BLACKBIRD 8008  
 VISION CASH 3414  
 CAMAS PRAIRIE K LADY 7507

BW	78
Adj 205	630
WW Ratio	98
Adj. 365	1057
YW Ratio	110
Dam's NR	
	1/98

ANGUS 365

CED	BW	WW	YW	RADG	DOC	HP	CEM	Milk	Marb	RE	\$M	\$B	\$C
4	2.8	70	127	0.33	18	10.8	12	36	0.51	0.54	65	158	270





**57 CROUTHAMEL RAPPORT 5034**  
 BD: 01/17/25 Reg #: 628366989 Tattoo: 5034

BW	78
Adj 205	677
WW Ratio	106
Adj. 365	1023
YW Ratio	107
Dam's NR	
1/106	

SQUARE B TRUE NORTH 8052  
**BCC RAPPORT**  
 BCC EVERELDA ENTENSE 58J

CROUTHAMEL EMULATION 7519  
**CROUTHAMEL BERNICE 3235**  
 CROUTHAMEL BERNICE 0048

#S A V RAINFALL 6846  
 ELBANNA OF CONANGA 1209  
 #SITZ STELLAR 726D  
 BCC EVERELDA ENTENSE 147F  
 #JVC EMULATION EXT V910  
 CCC MISSY 907  
 #TEHAMA TAHOE 8767  
 CROUTHAMEL BERNICE 8507

**59 CROUTHAMEL RAPPORT 5035**  
 BD: 01/17/25 Reg #: 21463991 Tattoo: 5035

BW	78
Adj 205	695
WW Ratio	108
Adj. 365	1047
YW Ratio	109
Dam's NR	
1/108	

SQUARE B TRUE NORTH 8052  
**BCC RAPPORT**  
 BCC EVERELDA ENTENSE 58J

KOUPALS B&B PATHFINDER 8106  
**CROUTHAMEL BLACKCAP 3023**  
 CROUTHAMEL BLACKCAP 1047

#S A V RAINFALL 6846  
 ELBANNA OF CONANGA 1209  
 #SITZ STELLAR 726D  
 BCC EVERELDA ENTENSE 147F  
 LT ENTERPRISE 5213  
 #B&B BLKBD PROGRESS 3015  
 CONNEALY EMERALD  
 CROUTHAMEL BLACKCAP 9099

CED	BW	WW	YW	RADG	DOC	HP	CEM	Milk	Marb	RE	\$M	\$B	\$C

CED	BW	WW	YW	RADG	DOC	HP	CEM	Milk	Marb	RE	\$M	\$B	\$C
-2	1.8	89	159	0.30	25	13.1	6	31	0.73	0.60	71	159	277

**58 CROUTHAMEL RAPPORT 5024**  
 BD: 01/15/25 Reg #: 21463996 Tattoo: 5024

BW	72
Adj 205	656
WW Ratio	102
Adj. 365	826
YW Ratio	86
Dam's NR	
1/102	

SQUARE B TRUE NORTH 8052  
**BCC RAPPORT**  
 BCC EVERELDA ENTENSE 58J

#MUSGRAVE 316 EXCLUSIVE  
**CROUTHAMEL BARBARA 3019**  
 CROUTHAMEL BARBARA 8060

#S A V RAINFALL 6846  
 ELBANNA OF CONANGA 1209  
 #SITZ STELLAR 726D  
 BCC EVERELDA ENTENSE 147F  
 #LD CAPITALIST 316  
 MUSGRAVE PRIM LASSIE 163-386  
 BLUEGRASS CHISUM 444  
 CROUTHAMEL BARBARA 5052

**60 CROUTHAMEL RAPPORT 5023**  
 BD: 01/15/25 Reg #: 21463986 Tattoo: 5023

BW	79
Adj 205	652
WW Ratio	102
Adj. 365	
YW Ratio	
Dam's NR	
1/102	

SQUARE B TRUE NORTH 8052  
**BCC RAPPORT**  
 BCC EVERELDA ENTENSE 58J

LT REVERED  
**CROUTHAMEL BLACKBIRD 3043**  
 #CROUTHAMEL BLACKBIRD 4522

#S A V RAINFALL 6846  
 ELBANNA OF CONANGA 1209  
 #SITZ STELLAR 726D  
 BCC EVERELDA ENTENSE 147F  
 #BASIN RAINMAKER 4404  
 LT ASHLEY 7078  
 #S A V FINAL ANSWER 0035  
 SITZ BLACKBIRD 107L

CED	BW	WW	YW	RADG	DOC	HP	CEM	Milk	Marb	RE	\$M	\$B	\$C
5	-0.3	77	136	0.26	25	12.5	11	36	0.93	0.36	78	177	308

CED	BW	WW	YW	RADG	DOC	HP	CEM	Milk	Marb	RE	\$M	\$B	\$C
7	0.0	75	129	0.23	18	11.8	6	37	0.61	0.27	81	139	261



## Crouthamel Instinct 1103

INSTINCT 1103 has provided a great outcross for our program that doesn't sacrifice a bit of performance where he sits in the top 15% of the breed for WW and top 25% for YW EPD with a modest birth figure. What we like about that performance is the shape and design it comes in with added length, base width, and capacity. He is also an extremely good fronted, attractive made bull that should leave behind a tremendous set of daughters. The cow family is time tested where the granddam is Pathfinder with a flawless record of BR 9/95, WR 9/106, YR 8/103, and has 8/115 for IMF and 8/105 for Ribeye. She breeds AI almost every year and maintains a 363-day calving interval. Her dam was one of the first Sitz cows we owned.

**INSTINCT SONS SELL AS LOTS 61-70**



**61 CROUTHAMEL INSTINCT 5038**  
 BD: 01/17/25 Reg #: 21467731 Tattoo: 5038

BW	94
Adj 205	720
WW Ratio	109
Adj. 365	1080
YW Ratio	110
Dam's NR	
2/112	

HAYTER RESOURCE E12  
**CROUTHAMEL INSTINCT 1103**  
 CROUTHAMEL BLACKBIRD 7128

#S A V RESOURCE 1441  
 BO BO COUNTESS 1470  
 BLUEGRASS CHISUM 444  
 #CROUTHAMEL BLACKBIRD 4522  
 #MUSGRAVE 316 STUNNER  
 A A R BLACKBIRD 3152  
 #CROUTHAMEL PROTOCOL 3022  
 CROUTHAMEL BARBARA C502

A A R STUNNER 9186  
**CROUTHAMEL BARBARA 2156**  
 CROUTHAMEL BARBARA 0199

**64 CROUTHAMEL INSTINCT 5066**  
 BD: 01/23/25 Reg #: 21459918 Tattoo: 5066

BW	89
Adj 205	702
WW Ratio	106
Adj. 365	987
YW Ratio	100
Dam's NR	
2/107	

HAYTER RESOURCE E12  
**CROUTHAMEL INSTINCT 1103**  
 CROUTHAMEL BLACKBIRD 7128

#S A V RESOURCE 1441  
 BO BO COUNTESS 1470  
 BLUEGRASS CHISUM 444  
 #CROUTHAMEL BLACKBIRD 4522  
 #BARSTOW CASH  
 BARSTOW MISS DIANNA 225  
 #S A V NET WORTH 4200  
 #BRUSETT EXT ERISKAY 518

#BARSTOW BANKROLL B73  
**CROUTHAMEL ERISKAY 2517**  
 #CCC ERISKAY 1538

ANGUS Powered by Ngage Genetics

CED	BW	WW	YW	RADG	DOC	HP	CEM	Milk	Marb	RE	\$M	\$B	\$C
-1	3.0	84	138	0.27	23	11.4	1	32	0.39	0.68	57	137	235

ANGUS Powered by Ngage Genetics

CED	BW	WW	YW	RADG	DOC	HP	CEM	Milk	Marb	RE	\$M	\$B	\$C
-4	3.0	81	142	0.30	20	10.4	-5	27	0.14	0.73	36	132	207

**62 CROUTHAMEL INSTINCT 5093**  
 BD: 01/30/25 Reg #: 21459945 Tattoo: 5093

BW	83
Adj 205	695
WW Ratio	105
Adj. 365	1007
YW Ratio	102
Dam's NR	
2/99	

HAYTER RESOURCE E12  
**CROUTHAMEL INSTINCT 1103**  
 CROUTHAMEL BLACKBIRD 7128

#S A V RESOURCE 1441  
 BO BO COUNTESS 1470  
 BLUEGRASS CHISUM 444  
 #CROUTHAMEL BLACKBIRD 4522  
 MYTTY RESOURCE 7701  
 OX BOW LINDA 403  
 #SITZ LONGEVITY 556Z  
 #SITZ BLACKCAP BARDOLIER 1068

OX MYTTY 0329  
**CROUTHAMEL BLACKCAP 2306**  
 CROUTHAMEL BLACKCAP 5002

**65 CROUTHAMEL INSTINCT 5050**  
 BD: 01/19/25 Reg #: 21467732 Tattoo: 5050

BW	94
Adj 205	624
WW Ratio	94
Adj. 365	997
YW Ratio	101
Dam's NR	
2/101	

HAYTER RESOURCE E12  
**CROUTHAMEL INSTINCT 1103**  
 CROUTHAMEL BLACKBIRD 7128

#S A V RESOURCE 1441  
 BO BO COUNTESS 1470  
 BLUEGRASS CHISUM 444  
 #CROUTHAMEL BLACKBIRD 4522  
 HA OUTSIDE 3008  
 #T E F JET PRINCESS 905  
 #CONNEALY SPUR  
 #CROUTHAMEL EVERELDA 2511

TEF DOUBLE DOWN 711  
**CROUTHAMEL EVERELDA 2157**  
 CROUTHAMEL EVERELDA 0533

ANGUS Powered by Ngage Genetics

CED	BW	WW	YW	RADG	DOC	HP	CEM	Milk	Marb	RE	\$M	\$B	\$C
3	0.9	79	134	0.27	24	12.5	3	33	0.63	0.66	77	159	283

ANGUS Powered by Ngage Genetics

CED	BW	WW	YW	RADG	DOC	HP	CEM	Milk	Marb	RE	\$M	\$B	\$C
-2	4.6	80	136	0.26	9	6.1	4	29	0.36	0.83	57	128	223

**63 CROUTHAMEL INSTINCT 5090**  
 BD: 01/29/25 Reg #: 21459940 Tattoo: 5090

BW	88
Adj 205	726
WW Ratio	110
Adj. 365	977
YW Ratio	100
Dam's NR	
2/110	

HAYTER RESOURCE E12  
**CROUTHAMEL INSTINCT 1103**  
 CROUTHAMEL BLACKBIRD 7128

#S A V RESOURCE 1441  
 BO BO COUNTESS 1470  
 BLUEGRASS CHISUM 444  
 #CROUTHAMEL BLACKBIRD 4522  
 #SITZ STELLAR 726D  
 SITZ BARBARAMERE NELL 765D  
 CROUTHAMEL GAME DAY 5045  
 #CROUTHAMEL BLACKBIRD 3068

SITZ BARRICADE 632F  
**CROUTHAMEL BLACKBIRD 2511**  
 CROUTHAMEL BLACKBIRD 7136

**66 CROUTHAMEL INSTINCT 5052**  
 BD: 01/20/25 Reg #: 21459909 Tattoo: 5052

BW	89
Adj 205	634
WW Ratio	96
Adj. 365	904
YW Ratio	92
Dam's NR	
2/94	

HAYTER RESOURCE E12  
**CROUTHAMEL INSTINCT 1103**  
 CROUTHAMEL BLACKBIRD 7128

#S A V RESOURCE 1441  
 BO BO COUNTESS 1470  
 BLUEGRASS CHISUM 444  
 #CROUTHAMEL BLACKBIRD 4522  
 #DEER VALLEY GROWTH FUND  
 JANSSEN BESSIE HEIRESS 6028  
 #KG JUSTIFIED 3023  
 CROUTHAMEL BARBARAMERE 5061

JANSSEN DOW JONES 0005  
**CROUTHAMEL BARBARAMERE 2134**  
 CROUTHAMEL BARBARAMERE 7010

ANGUS Powered by Ngage Genetics

CED	BW	WW	YW	RADG	DOC	HP	CEM	Milk	Marb	RE	\$M	\$B	\$C
-7	3.5	88	147	0.24	21	12.2	-9	27	0.63	0.08	62	133	235

ANGUS Powered by Ngage Genetics

CED	BW	WW	YW	RADG	DOC	HP	CEM	Milk	Marb	RE	\$M	\$B	\$C
1	2.0	76	123	0.24	34	9.4	7	29	0.20	0.50	72	140	254



67

**67 CROUTHAMEL INSTINCT 5085**  
 BD: 01/28/25 Reg #: 21459929 Tattoo: 5085

HAYTER RESOURCE E12	#S A V RESOURCE 1441	<b>BW</b>	89
<b>CROUTHAMEL INSTINCT 1103</b>	BO BO COUNTESS 1470	<b>Adj 205</b>	726
CROUTHAMEL BLACKBIRD 7128	BLUEGRASS CHISUM 444	<b>WW Ratio</b>	110
	#CROUTHAMEL BLACKBIRD 4522	<b>Adj. 365</b>	1139
CROUTHAMEL GAME DAY 8052	CROUTHAMEL GAME DAY 5045	<b>YW Ratio</b>	116
<b>CROUTHAMEL BLACKBIRD 1311</b>	CROUTHAMEL EVERELDA 6557	<b>Dam's NR</b>	
CROUTHAMEL BLACKBIRD 9270	#S POWERPOINT WS 5503	2/112	
	#CROUTHAMEL BLACKBIRD 3068		

**ANGUS**  
Powered by Angus Genetics

CED	BW	WW	YW	RADG	DOC	HP	CEM	Milk	Marb	RE	\$M	\$B	\$C
6	0.6	81	133	0.24	29	12.2	5	29	0.45	0.75	78	138	257

**69 CROUTHAMEL INSTINCT 5135**  
 BD: 02/08/25 Reg #: 21459946 Tattoo: 5135

HAYTER RESOURCE E12	#S A V RESOURCE 1441	<b>BW</b>	89
<b>CROUTHAMEL INSTINCT 1103</b>	BO BO COUNTESS 1470	<b>Adj 205</b>	720
CROUTHAMEL BLACKBIRD 7128	BLUEGRASS CHISUM 444	<b>WW Ratio</b>	109
	#CROUTHAMEL BLACKBIRD 4522	<b>Adj. 365</b>	1093
CROUTHAMEL GAME DAY 8052	CROUTHAMEL GAME DAY 5045	<b>YW Ratio</b>	111
<b>CROUTHAMEL BLACKBIRD 1330</b>	CROUTHAMEL EVERELDA 6557	<b>Dam's NR</b>	
CROUTHAMEL BLACKBIRD 9602	#HA COWBOY UP 5405	2/117	
	#CROUTHAMEL BLACKBIRD 3068		

**ANGUS**  
Powered by Angus Genetics

CED	BW	WW	YW	RADG	DOC	HP	CEM	Milk	Marb	RE	\$M	\$B	\$C
1	2.8	87	145	0.25	20	8.3	4	24	0.37	0.50	58	134	232

**68 CROUTHAMEL INSTINCT 5184**  
 BD: 02/15/25 Reg #: 21459959 Tattoo: 5184

HAYTER RESOURCE E12	#S A V RESOURCE 1441	<b>BW</b>	82
<b>CROUTHAMEL INSTINCT 1103</b>	BO BO COUNTESS 1470	<b>Adj 205</b>	595
CROUTHAMEL BLACKBIRD 7128	BLUEGRASS CHISUM 444	<b>WW Ratio</b>	90
	#CROUTHAMEL BLACKBIRD 4522	<b>Adj. 365</b>	1022
CROUTHAMEL GAME DAY 8052	CROUTHAMEL GAME DAY 5045	<b>YW Ratio</b>	104
<b>CROUTHAMEL BARBARAMERE 2162</b>	CROUTHAMEL EVERELDA 6557	<b>Dam's NR</b>	
CROUTHAMEL BARBARAMERE 0025	#PRAIRIE PRIDE NEXT STEP 2036	2/97	
	CROUTHAMEL BARBARAMERE 4120		

**ANGUS**  
Powered by Angus Genetics

CED	BW	WW	YW	RADG	DOC	HP	CEM	Milk	Marb	RE	\$M	\$B	\$C
5	1.2	69	125	0.28	23	9.2	8	22	0.66	0.27	58	159	264

**70 CROUTHAMEL INSTINCT 5089**  
 BD: 01/29/25 Reg #: 21459937 Tattoo: 5089

HAYTER RESOURCE E12	#S A V RESOURCE 1441	<b>BW</b>	90
<b>CROUTHAMEL INSTINCT 1103</b>	BO BO COUNTESS 1470	<b>Adj 205</b>	699
CROUTHAMEL BLACKBIRD 7128	BLUEGRASS CHISUM 444	<b>WW Ratio</b>	105
	#CROUTHAMEL BLACKBIRD 4522	<b>Adj. 365</b>	950
CROUTHAMEL SPUR 0556	#CONNEALY SPUR	<b>YW Ratio</b>	96
<b>CROUTHAMEL MONTANADREAM 2106</b>	#CROUTHAMEL BLACKBIRD 3068	<b>Dam's NR</b>	
CROUTHAMEL MONTANADREAM 8188	JVC EMULATION EXT V910	2/93	
	CCC MONTANA DREAM 020		

**ANGUS**  
Powered by Angus Genetics

CED	BW	WW	YW	RADG	DOC	HP	CEM	Milk	Marb	RE	\$M	\$B	\$C
-1	2.9	78	129	0.23	18	11.3	1	33	0.53	0.53	71	140	253



## Sitz Stellar 726D

The STELLAR cattle have worked well in the Angus breed across every environment and landscape from coast to coast. I think that says a lot about the consistency and quality of their design and build. They are probably the best footed Angus cattle going and their muscle shape and expression is second to none. Outside of the direct ET sons, we have used a son from the Sackman program that does all the same yet probably adds more capacity and internal dimension to his offspring over his sire.

**HIS SONS AND GRANDSONS SELL AS LOTS 71-79**



**71 CROUTHAMEL STELLAR 5502**  
 BD: 01/20/25 Reg #: 21471528 Tattoo: 5502

BW	85
Adj 205	614
WW Ratio	ET
Adj. 365	1027
YW Ratio	ET
Dam's NR	
4/105	

#MOHNEN SUBSTANTIAL 272 #BENFIELD SUBSTANCE 8506  
 #SITZ STELLAR 726D MOHNEN GLYN MAWR ELBA 1758  
 SITZ PRIDE 200B #CONNEALY FINAL PRODUCT  
 #SITZ PRIDE 308Y  
 CROUTHAMEL GAME DAY 5045 #GDAR GAME DAY 449  
**CROUTHAMEL BLACKBIRD 7136** CROUTHAMEL BLACKCAP 3503  
 #CROUTHAMEL BLACKBIRD 3068 MYTTY FOREFRONT 1135  
 CCC BLACKBIRD 1080

**ANGUS**  
Powered by MyAngus.com

CED	BW	WW	YW	RADG	DOC	HP	CEM	Milk	Marb	RE	\$M	\$B	\$C
8	-0.3	69	135	0.28	17	9.8	8	30	0.56	0.22	72	107	211

**74 CROUTHAMEL STELLAR 5145**  
 BD: 02/10/25 Reg #: 21460129 Tattoo: 5145

BW	86
Adj 205	705
WW Ratio	101
Adj. 365	1092
YW Ratio	106
Dam's NR	
2/103	

#SITZ STELLAR 726D #MOHNEN SUBSTANTIAL 272  
**SACKMANN STELLAR 2537** SITZ PRIDE 200B  
 SACKMANN DIXIE ERICA 6124 #S A V RESOURCE 1441  
 #HA PRIME CUT 4493 O C C DIXIE ERICA 871N  
**CROUTHAMEL BLACKBIRD 1552** VERMILION SIRLOIN  
 #CROUTHAMEL BLACKBIRD 3068 HA MISS BLACKCAP 9127  
 CCC BLACKBIRD 1080 MYTTY FOREFRONT 1135

**ANGUS**  
Powered by MyAngus.com

CED	BW	WW	YW	RADG	DOC	HP	CEM	Milk	Marb	RE	\$M	\$B	\$C
3	1.7	81	144	0.28	6	12.7	6	33	0.70	1.14	66	169	285

**72 CROUTHAMEL STELLAR 5506**  
 BD: 01/25/25 Reg #: 21471529 Tattoo: 5506

BW	88
Adj 205	549
WW Ratio	ET
Adj. 365	949
YW Ratio	ET
Dam's NR	
4/105	

#MOHNEN SUBSTANTIAL 272 #BENFIELD SUBSTANCE 8506  
 #SITZ STELLAR 726D MOHNEN GLYN MAWR ELBA 1758  
 SITZ PRIDE 200B #CONNEALY FINAL PRODUCT  
 #SITZ PRIDE 308Y  
 CROUTHAMEL GAME DAY 5045 #GDAR GAME DAY 449  
**CROUTHAMEL BLACKBIRD 7136** CROUTHAMEL BLACKCAP 3503  
 #CROUTHAMEL BLACKBIRD 3068 MYTTY FOREFRONT 1135  
 CCC BLACKBIRD 1080

**ANGUS**  
Powered by MyAngus.com

CED	BW	WW	YW	RADG	DOC	HP	CEM	Milk	Marb	RE	\$M	\$B	\$C
-2	1.8	74	125	0.24	16	12.1	5	25	0.72	0.41	85	157	289

**75 CROUTHAMEL STELLAR 5186**  
 BD: 02/15/25 Reg #: 21460147 Tattoo: 5186

BW	84
Adj 205	701
WW Ratio	100
Adj. 365	1080
YW Ratio	105
Dam's NR	
4/103	

#SITZ STELLAR 726D #MOHNEN SUBSTANTIAL 272  
**SACKMANN STELLAR 2537** SITZ PRIDE 200B  
 SACKMANN DIXIE ERICA 6124 #S A V RESOURCE 1441  
 #CONNEALY SPUR O C C DIXIE ERICA 871N  
**CROUTHAMEL BURMERE 0038** #CONNEALY STIMULUS 8419  
 CROUTHAMEL BURMERE 7523 #JAZZA OF CONANGA 8594  
 #CROUTHAMEL PROTOCOL 3022  
 C C MISSY 704

**ANGUS**  
Powered by MyAngus.com

CED	BW	WW	YW	RADG	DOC	HP	CEM	Milk	Marb	RE	\$M	\$B	\$C
8	1.6	68	126	0.26	11	14.6	12	27	0.38	0.82	73	136	249

**73 CROUTHAMEL STELLAR 5511**  
 BD: 01/28/25 Reg #: 21471533 Tattoo: 5511

BW	84
Adj 205	497
WW Ratio	ET
Adj. 365	964
YW Ratio	ET
Dam's NR	
4/105	

#MOHNEN SUBSTANTIAL 272 #BENFIELD SUBSTANCE 8506  
 #SITZ STELLAR 726D MOHNEN GLYN MAWR ELBA 1758  
 SITZ PRIDE 200B #CONNEALY FINAL PRODUCT  
 #SITZ PRIDE 308Y  
 CROUTHAMEL GAME DAY 5045 #GDAR GAME DAY 449  
**CROUTHAMEL BLACKBIRD 7136** CROUTHAMEL BLACKCAP 3503  
 #CROUTHAMEL BLACKBIRD 3068 MYTTY FOREFRONT 1135  
 CCC BLACKBIRD 1080

**ANGUS**  
Powered by MyAngus.com

CED	BW	WW	YW	RADG	DOC	HP	CEM	Milk	Marb	RE	\$M	\$B	\$C
0	2.3	72	124	0.22	18	10.8	9	24	0.75	-0.07	70	139	250



76

**CROUTHAMEL STELLAR 5080**

BD: 01/26/25 Reg #: 21460036 Tattoo: 5080

#SITZ STELLAR 726D  
**SACKMANN STELLAR 2537**  
SACKMANN DIXIE ERICA 6124

#S A V NET WORTH 4200  
**CROUTHAMEL FOREVER LADY 1516**  
#ER FOREVER LADY N133

#MOHNEN SUBSTANTIAL 272  
SITZ PRIDE 200B  
#S A V RESOURCE 1441  
O C C DIXIE ERICA 871N  
#S A V 8180 TRAVELER 004  
S A V MAY 2410  
#B C C BUSHWACKER 41-93  
ER FOREVER LADY K978

BW	82
Adj 205	698
WW Ratio	100
Adj. 365	1104
YW Ratio	108

Dam's NR	3/98
----------	------

ANGUS<sup>GS</sup>

CED	BW	WW	YW	RADG	DOC	HP	CEM	Milk	Marb	RE	\$M	\$B	\$C
8	0.8	73	132	0.26	3	15.1	13	28	0.66	0.81	63	136	239

80

**CROUTHAMEL IMAX 5533**

BD: 02/21/25 Reg #: 21471539 Tattoo: 5533

#MAR INNOVATION 251  
**NELSON IMAX**  
#NELSON PRIDE 0663

CROUTHAMEL GAME DAY 5045  
**CROUTHAMEL BLACKBIRD 7136**  
#CROUTHAMEL BLACKBIRD 3068

#CONNEALY IMPRESSION  
#MAR FINAL KAHUNA 856  
NELSON IMAGE MAKER 7017  
#NELSON PRIDE 6110  
#GDAR GAME DAY 449  
CROUTHAMEL BLACKCAP 3503  
MYTTY FOREFRONT 1135  
CCC BLACKBIRD 1080

BW	82
Adj 205	731
WW Ratio	ET
Adj. 365	840
YW Ratio	ET

Dam's NR	4/105
----------	-------

ANGUS<sup>GS</sup>

CED	BW	WW	YW	RADG	DOC	HP	CEM	Milk	Marb	RE	\$M	\$B	\$C
7	1.6	59	111	0.26	22	12.3	13	35	1.00	0.17	82	154	282

77

**CROUTHAMEL STELLAR 5091**

BD: 01/29/25 Reg #: 21460041 Tattoo: 5091

#SITZ STELLAR 726D  
**SACKMANN STELLAR 2537**  
SACKMANN DIXIE ERICA 6124

#HA PRIME CUT 4493  
**CROUTHAMEL BLACKBIRD 1553**  
#CROUTHAMEL BLACKBIRD 3068

#MOHNEN SUBSTANTIAL 272  
SITZ PRIDE 200B  
#S A V RESOURCE 1441  
O C C DIXIE ERICA 871N  
VERMILION SIRLOIN  
HA MISS BLACKCAP 9127  
MYTTY FOREFRONT 1135  
CCC BLACKBIRD 1080

BW	85
Adj 205	700
WW Ratio	100
Adj. 365	998
YW Ratio	97

Dam's NR	3/106
----------	-------

ANGUS<sup>GS</sup>

CED	BW	WW	YW	RADG	DOC	HP	CEM	Milk	Marb	RE	\$M	\$B	\$C
7	0.0	78	141	0.26	4	14.2	5	28	0.48	0.62	57	134	231

81

**CROUTHAMEL IMAX 5520**

BD: 02/14/25 Reg #: 21471538 Tattoo: 5520

#MAR INNOVATION 251  
**NELSON IMAX**  
#NELSON PRIDE 0663

CROUTHAMEL GAME DAY 5045  
**CROUTHAMEL BLACKBIRD 7136**  
#CROUTHAMEL BLACKBIRD 3068

#CONNEALY IMPRESSION  
#MAR FINAL KAHUNA 856  
NELSON IMAGE MAKER 7017  
#NELSON PRIDE 6110  
#GDAR GAME DAY 449  
CROUTHAMEL BLACKCAP 3503  
MYTTY FOREFRONT 1135  
CCC BLACKBIRD 1080

BW	80
Adj 205	566
WW Ratio	ET
Adj. 365	912
YW Ratio	ET

Dam's NR	4/105
----------	-------

ANGUS<sup>GS</sup>

CED	BW	WW	YW	RADG	DOC	HP	CEM	Milk	Marb	RE	\$M	\$B	\$C
7	0.6	69	124	0.24	11	11.9	12	32	0.72	0.31	69	151	265

78

**CROUTHAMEL STELLAR 5207**

BD: 02/20/25 Reg #: 21460180 Tattoo: 5207

#SITZ STELLAR 726D  
**SACKMANN STELLAR 2537**  
SACKMANN DIXIE ERICA 6124

#S POWERPOINT WS 5503  
**CROUTHAMEL BLACKBIRD 1524**  
#CROUTHAMEL BLACKBIRD 3068

#MOHNEN SUBSTANTIAL 272  
SITZ PRIDE 200B  
#S A V RESOURCE 1441  
O C C DIXIE ERICA 871N  
TEHAMA REVERE  
S QUEEN ESSA 248  
MYTTY FOREFRONT 1135  
CCC BLACKBIRD 1080

BW	81
Adj 205	658
WW Ratio	94
Adj. 365	1071
YW Ratio	104

Dam's NR	3/97
----------	------

ANGUS<sup>GS</sup>

CED	BW	WW	YW	RADG	DOC	HP	CEM	Milk	Marb	RE	\$M	\$B	\$C
9	1.4	82	143	0.26	-3	15.1	7	24	-0.07	1.19	59	145	247

79

**CROUTHAMEL STELLAR 5222**

BD: 02/25/25 Reg #: 21460289 Tattoo: 5222

#SITZ STELLAR 726D  
**SACKMANN STELLAR 2537**  
SACKMANN DIXIE ERICA 6124

#PRAIRIE PRIDE NEXT STEP 2036  
**CROUTHAMEL BARBARAMERE 0025**  
CROUTHAMEL BARBARAMERE 4120

#MOHNEN SUBSTANTIAL 272  
SITZ PRIDE 200B  
#S A V RESOURCE 1441  
O C C DIXIE ERICA 871N  
#SYDGEN 928 DESTINATION 5420  
FLYING V MISS PRIDE 426  
#GDAR GAME DAY 449  
BERBOS BARBARAMERE 6106

BW	83
Adj 205	716
WW Ratio	110
Adj. 365	
YW Ratio	

Dam's NR	3/107
----------	-------

ANGUS<sup>GS</sup>

CED	BW	WW	YW	RADG	DOC	HP	CEM	Milk	Marb	RE	\$M	\$B	\$C
9	1.0	72	127	0.18	6	12.3	7	24	0.16	0.56	75	110	218





82

**82 CROUTHAMEL ORIGINAL 5111**  
 BD: 02/04/25 Reg #: 21460074 Tattoo: 5111

BW	94
Adj 205	763
WW Ratio	109
Adj. 365	1033
YW Ratio	100
Dam's NR	
4/109	

#HA PRIME CUT 4493  
**CROUTHAMEL ORIGINAL 0524**  
 #CROUTHAMEL BLACKBIRD 3068

#HA COWBOY UP 5405  
**CROUTHAMEL BLACKBIRD 9601**  
 #CROUTHAMEL BLACKBIRD 3068

VERMILION SIRLOIN  
 HA MISS BLACKCAP 9127  
 MYTTY FOREFRONT 1135  
 CCC BLACKBIRD 1080  
 HA OUTSIDE 3008  
 #HA BLACKCAP LADY 1602  
 MYTTY FOREFRONT 1135  
 CCC BLACKBIRD 1080

**ANGUS**  
Powered by Wageningen UR

CED	BW	WW	YW	RADG	DOC	HP	CEM	Milk	Marb	RE	\$M	\$B	\$C
8	1.3	81	133	0.24	9	9.1	7	34	0.06	0.37	61	98	188

**83 CROUTHAMEL ORIGINAL 5069**  
 BD: 01/23/25 Reg #: 21460014 Tattoo: 5069

BW	89
Adj 205	706
WW Ratio	101
Adj. 365	876
YW Ratio	85
Dam's NR	
7/99	

#HA PRIME CUT 4493  
**CROUTHAMEL ORIGINAL 0524**  
 #CROUTHAMEL BLACKBIRD 3068

#KG JUSTIFIED 3023  
**CROUTHAMEL BLACKBIRD 7001**  
 CROUTHAMEL BLACKBIRD 5016

VERMILION SIRLOIN  
 HA MISS BLACKCAP 9127  
 MYTTY FOREFRONT 1135  
 CCC BLACKBIRD 1080  
 CONNEALY JUDGMENT  
 KG MISS MAGIC 1443  
 #CROUTHAMEL PROTOCOL 3022  
 #CCC LASSIE BLACKBIRD 806

**ANGUS**  
Powered by Wageningen UR

CED	BW	WW	YW	RADG	DOC	HP	CEM	Milk	Marb	RE	\$M	\$B	\$C
5	1.7	81	133	0.24	26	10.9	10	37	0.81	0.16	75	156	277



**84 CROUTHAMEL ORIGINAL 5137**  
 BD: 02/08/25 Reg #: 21460118 Tattoo: 5137

BW	77
Adj 205	647
WW Ratio	92
Adj. 365	1026
YW Ratio	100
Dam's NR	
7/95	

#HA PRIME CUT 4493  
**CROUTHAMEL ORIGINAL 0524**  
 #CROUTHAMEL BLACKBIRD 3068

#O C C PAXTON 730P  
**CLC PISTOL 650**  
 CROUTHAMEL COUNTESS 4024

VERMILION SIRLOIN  
 HA MISS BLACKCAP 9127  
 MYTTY FOREFRONT 1135  
 CCC BLACKBIRD 1080  
 O C C FOCUS 813F  
 O C C BLACKBIRD 736K  
 BUFORD BLUESTEM 9974  
 #MYTTY COUNTESS R178

**ANGUS**  
Powered by Wageningen UR

CED	BW	WW	YW	RADG	DOC	HP	CEM	Milk	Marb	RE	\$M	\$B	\$C
8	0.0	54	110	0.30	12	7.9	8	25	0.11	0.43	36	110	179



85

**CROUTHAMEL ORIGINAL 5157**

BD: 02/11/25 Reg #: 21460140 Tattoo: 5157

#HA PRIME CUT 4493  
**CROUTHAMEL ORIGINAL 0524**  
#CROUTHAMEL BLACKBIRD 3068

#SITZ LONGEVITY 556Z  
**CROUTHAMEL BLACKCAP 5002**  
#SITZ BLACKCAP BARDOLIER 1068

VERMILION SIRLOIN  
HA MISS BLACKCAP 9127  
MYTTY FOREFRONT 1135  
CCC BLACKBIRD 1080  
#CONNEALY FINAL PRODUCT  
SITZ PRIDE 625W  
#D H D TRAVELER 6807  
#SITZ BLACKCAP BARDOLIER 3198

BW	89
Adj 205	753
WW Ratio	107
Adj. 365	1038
YW Ratio	101

Dam's NR	9/110
----------	-------

ANGUS<sup>GS</sup>

CED	BW	WW	YW	RADG	DOC	HP	CEM	Milk	Marb	RE	\$M	\$B	\$C
2	2.1	79	131	0.23	20	10.5	3	34	0.56	0.38	61	129	228



86

**CROUTHAMEL ORIGINAL 5220**

BD: 02/25/25 Reg #: 21460187 Tattoo: 5220

#HA PRIME CUT 4493  
**CROUTHAMEL ORIGINAL 0524**  
#CROUTHAMEL BLACKBIRD 3068

BRUIN ENVY 7248  
**CROUTHAMEL ERICA PRIDE 0172**  
CROUTHAMEL ERICA PRIDE 6168

VERMILION SIRLOIN  
HA MISS BLACKCAP 9127  
MYTTY FOREFRONT 1135  
CCC BLACKBIRD 1080  
#S A V RECHARGE 3436  
BRUIN 943G BLACKBIRD 4264  
CROUTHAMEL UPWARD 2541  
CCC ERICA PRIDE 023

BW	95
Adj 205	726
WW Ratio	104
Adj. 365	
YW Ratio	

Dam's NR	4/99
----------	------

ANGUS<sup>GS</sup>

CED	BW	WW	YW	RADG	DOC	HP	CEM	Milk	Marb	RE	\$M	\$B	\$C
6	2.0	65	123	0.29	24	7.0	12	31	0.25	1.01	29	130	198

88

**CROUTHAMEL SPUR 5132**

BD: 02/07/25 Reg #: 21460205 Tattoo: 5132

CROUTHAMEL SPUR 0556  
**CROUTHAMEL SPUR 3119**  
CROUTHAMEL BURMERE 8529

#CROUTHAMEL PROTOCOL 3022  
**CROUTHAMEL BARBARAMERE 7150**  
BERBOS BARBARAMERE 6106

#CONNEALY SPUR  
#CROUTHAMEL BLACKBIRD 3068  
#CONNEALY BLACK GRANITE  
CCC MISSY 907  
CCC MERRITT 030  
#CCC LADY RAIN 932  
#SITZ TRAVELER 9929  
BERBOS BARBARAMERE 3119

BW	83
Adj 205	683
WW Ratio	105
Adj. 365	1089
YW Ratio	107

Dam's NR	7/104
----------	-------

ANGUS<sup>GS</sup>

CED	BW	WW	YW	RADG	DOC	HP	CEM	Milk	Marb	RE	\$M	\$B	\$C
1	2.2	69	125	0.26	17	8.7	11	30	0.38	0.40	42	116	192

87

**CROUTHAMEL ORIGINAL 5225**

BD: 02/26/25 Reg #: 21460257 Tattoo: 5225

#HA PRIME CUT 4493  
**CROUTHAMEL ORIGINAL 0524**  
#CROUTHAMEL BLACKBIRD 3068

CONNEALY REGULATOR  
**CROUTHAMEL BURMERE 8561**  
C C MISSY 704

VERMILION SIRLOIN  
HA MISS BLACKCAP 9127  
MYTTY FOREFRONT 1135  
CCC BLACKBIRD 1080  
#CONNEALY CAVALRY 1149  
BLACK CAYRA OF CONANGA 8127  
KG NEW DESIGN 878 4040  
M V C C MISSY 1114

BW	83
Adj 205	647
WW Ratio	99
Adj. 365	
YW Ratio	

Dam's NR	4/95
----------	------

ANGUS<sup>GS</sup>

CED	BW	WW	YW	RADG	DOC	HP	CEM	Milk	Marb	RE	\$M	\$B	\$C
8	2.8	84	144	0.32	21	8.0	9	23	0.12	0.81	38	144	225

89

**CROUTHAMEL SPUR 5244**

BD: 03/02/25 Reg #: 21460270 Tattoo: 5244

CROUTHAMEL SPUR 0556  
**CROUTHAMEL SPUR 3119**  
CROUTHAMEL BURMERE 8529

#ELLINGSON HOMEGROWN 6035  
**CROUTHAMEL BLACKBIRD 9026**  
CROUTHAMEL BLACKBIRD 7137

#CONNEALY SPUR  
#CROUTHAMEL BLACKBIRD 3068  
#CONNEALY BLACK GRANITE  
CCC MISSY 907  
#CTS REMEDY 1T01  
EA BLANCHE 4137  
CROUTHAMEL UPWARD 2541  
CROUTHAMEL BLACKBIRD 3008

BW	84
Adj 205	714
WW Ratio	109
Adj. 365	
YW Ratio	

Dam's NR	4/107
----------	-------

ANGUS<sup>GS</sup>

CED	BW	WW	YW	RADG	DOC	HP	CEM	Milk	Marb	RE	\$M	\$B	\$C
-2	4.4	87	141	0.24	10	10.2	9	28	0.15	0.91	71	124	232



90

**CROUTHAMEL SPUR 5292**

BD: 03/09/25 Reg #: 21460277 Tattoo: 5292

CROUTHAMEL SPUR 0556  
**CROUTHAMEL SPUR 3119**  
CROUTHAMEL BURMERE 8529

A A R OUTSIDE 5309  
**CROUTHAMEL QUEENIE 0084**  
COREY A QUEENIE 812

#CONNEALY SPUR  
#CROUTHAMEL BLACKBIRD 3068  
#CONNEALY BLACK GRANITE  
CCC MISSY 907  
HA OUTSIDE 3008  
A A R CLOVA 0307  
#S POWERPOINT WS 5503  
#CROUTHAMEL QUEENIE 5080

BW	80
Adj 205	733
WW Ratio	112
Adj. 365	
YW Ratio	

Dam's NR	3/103
----------	-------

ANGUS<sup>GS</sup>

CED	BW	WW	YW	RADG	DOC	HP	CEM	Milk	Marb	RE	\$M	\$B	\$C
8	0.9	70	124	0.23	9	12.0	10	36	0.51	0.58	68	125	230



91

**CROUTHAMEL PROTOCOL 5151**

BD: 02/11/25 Reg #: 21460209 Tattoo: 5151

CROUTHAMEL PROTOCOL 9531  
**CROUTHAMEL PROTOCOL 2181**  
 CROUTHAMEL BARBARAMERE 6024

TEF DOUBLE DOWN 711  
**CROUTHAMEL BLACKBIRD 0147**  
 CROUTHAMEL BLACKBIRD 7042

ANGUS GS  
Powered byangen.com

#CROUTHAMEL PROTOCOL 3022  
 ROCKING R EVERELDA 0102  
 #GDAR GAME DAY 449  
 #CROUTHAMEL BARBARAMERE 4018  
 HA OUTSIDE 3008  
 #T E F JET PRINCESS 905  
 #CROUTHAMEL PROTOCOL 3022  
 CCC QUENBEE 1084

BW	83
Adj 205	648
WW Ratio	99
Adj. 365	1021
YW Ratio	100
Dam's NR	
4/100	

CED	BW	WW	YW	RADG	DOC	HP	CEM	Milk	Marb	RE	\$M	\$B	\$C
12	-1.0	49	95	0.23	27	11.3	13	19	0.42	0.56	78	129	245

92

**CROUTHAMEL PROTOCOL 5194**

BD: 02/18/25 Reg #: 21460232 Tattoo: 5194

CROUTHAMEL PROTOCOL 9531  
**CROUTHAMEL PROTOCOL 2181**  
 CROUTHAMEL BARBARAMERE 6024

#GDAR GAME DAY 449  
**CROUTHAMEL BLACKBIRD 8012**  
 CROUTHAMEL BLACKBIRD 6017

ANGUS GS  
Powered byangen.com

#CROUTHAMEL PROTOCOL 3022  
 ROCKING R EVERELDA 0102  
 #GDAR GAME DAY 449  
 #CROUTHAMEL BARBARAMERE 4018  
 #BOYD NEW DAY 8005  
 #G D A R MISS WIX 474  
 CCC MERRITT 030  
 #CROUTHAMEL BLACKBIRD 3029

BW	85
Adj 205	648
WW Ratio	99
Adj. 365	1008
YW Ratio	99
Dam's NR	
6/104	

CED	BW	WW	YW	RADG	DOC	HP	CEM	Milk	Marb	RE	\$M	\$B	\$C
5	1.3	37	78	0.17	12	11.4	6	24	0.99	0.09	84	111	228

93

**CROUTHAMEL PROTOCOL 5141**

BD: 02/09/25 Reg #: 21460206 Tattoo: 5141

CROUTHAMEL PROTOCOL 9531  
**CROUTHAMEL PROTOCOL 2181**  
 CROUTHAMEL BARBARAMERE 6024

#CROUTHAMEL PROTOCOL 3022  
**#CROUTHAMEL BLACKBIRD 8008**  
 CROUTHAMEL BLACKBIRD 3508

ANGUS GS  
Powered byangen.com

#CROUTHAMEL PROTOCOL 3022  
 ROCKING R EVERELDA 0102  
 #GDAR GAME DAY 449  
 #CROUTHAMEL BARBARAMERE 4018  
 CCC MERRITT 030  
 #CCC LADY RAIN 932  
 #S A V BRILLIANCE 8077  
 ER BLACKBIRD J928

BW	89
Adj 205	630
WW Ratio	96
Adj. 365	955
YW Ratio	94
Dam's NR	
5/105	

CED	BW	WW	YW	RADG	DOC	HP	CEM	Milk	Marb	RE	\$M	\$B	\$C
8	0.2	48	95	0.26	30	11.6	13	28	0.64	0.35	87	128	253



97

94

**CROUTHAMEL STELLAR 5136**

BD: 02/08/25 Reg #: 21460091 Tattoo: 5136

#SITZ STELLAR 726D  
**SACKMANN STELLAR 2537**  
 SACKMANN DIXIE ERICA 6124

#BARSTOW BANKROLL B73  
**CROUTHAMEL ELAINE 0056**  
 CROUTHAMEL ELAINE 8179

ANGUS GS  
Powered byangen.com

#MOHNEN SUBSTANTIAL 272  
 SITZ PRIDE 200B  
 #S A V RESOURCE 1441  
 O C C DIXIE ERICA 871N  
 #BARSTOW CASH  
 BARSTOW MISS DIANNA Z25  
 JVC EMULATION EXT V910  
 #CCC EXT 1037

BW	89
Adj 205	686
WW Ratio	98
Adj. 365	1011
YW Ratio	98
Dam's NR	
4/100	

CED	BW	WW	YW	RADG	DOC	HP	CEM	Milk	Marb	RE	\$M	\$B	\$C
5	2.5	68	126	0.27	14	12.1	7	26	0.54	0.60	59	152	256

95

**CROUTHAMEL BARRICADE 5171**

BD: 02/13/25 Reg #: 21460146 Tattoo: 5171

SITZ BARRICADE 632F  
**CROUTHAMEL BARRICADE 2545**  
 CROUTHAMEL BLACKBIRD 7136

#H A IMAGE MAKER 0415  
**CROUTHAMEL EVERELDA 6509**  
 ROCKING R EVERELDA 0102

ANGUS GS  
Powered byangen.com

#SITZ STELLAR 726D  
 SITZ BARBARAMERE NELL 765D  
 CROUTHAMEL GAME DAY 5045  
 #CROUTHAMEL BLACKBIRD 3068  
 #HERO G267 OF R R 2418  
 H A RITO BLACKCAP 9038  
 #S A V BISMARCK 5682  
 SITZ EVERELDA ENTENSE 5038

BW	92
Adj 205	775
WW Ratio	111
Adj. 365	1033
YW Ratio	101
Dam's NR	
6/100	

CED	BW	WW	YW	RADG	DOC	HP	CEM	Milk	Marb	RE	\$M	\$B	\$C
4	2.8	80	128	0.23	16	11.5	7	22	0.51	0.41	74	136	250

96

**CROUTHAMEL RELEVANCE 5264**

BD: 03/08/25 Reg #: 21460274 Tattoo: 5264

#S A V RENOWN 3439  
**PACIFIC CATTLE RELEVANCE 041**  
 CCC MISSY 907

#CONNEALY SPUR  
**#CROUTHAMEL BLACKBIRD 0054**  
 MCCOY MISS YARDLEY 302-N66

ANGUS GS  
Powered byangen.com

RITO 707 OF IDEAL 3407 7075  
 S A V BLACKCAP MAY 4136  
 #CONNEALY PACKER 547  
 C C MISSY 704  
 #CONNEALY STIMULUS 8419  
 #JAZZA OF CONANGA 8594  
 #H A IMAGE MAKER 0415  
 MISS YARDLEY N66

BW	87
Adj 205	742
WW Ratio	114
Adj. 365	
YW Ratio	
Dam's NR	
4/111	

CED	BW	WW	YW	RADG	DOC	HP	CEM	Milk	Marb	RE	\$M	\$B	\$C
4	3.2	75	125	0.21	18	14.0	9	30	0.24	0.90	86	124	247

97

**CROUTHAMEL RELEVANCE 5162**

BD: 02/12/25 Reg #: 21460211 Tattoo: 5162

#S A V RENOWN 3439  
**PACIFIC CATTLE RELEVANCE 041**  
 CCC MISSY 907

#ELLINGSON HOMEGROWN 6035  
**CROUTHAMEL BLACKCAP 9055**  
 CROUTHAMEL BLACKCAP 5002

ANGUS GS  
Powered byangen.com

RITO 707 OF IDEAL 3407 7075  
 S A V BLACKCAP MAY 4136  
 #CONNEALY PACKER 547  
 C C MISSY 704  
 #CTS REMEDY TT01  
 EA BLANCHE 4137  
 #SITZ LONGEVITY 556Z  
 #SITZ BLACKCAP BARDOLIER 1068

BW	84
Adj 205	689
WW Ratio	106
Adj. 365	1035
YW Ratio	102
Dam's NR	
5/101	

CED	BW	WW	YW	RADG	DOC	HP	CEM	Milk	Marb	RE	\$M	\$B	\$C
2	3.7	84	144	0.27	14	10.4	8	25	0.45	0.70	58	138	237



98

**98 CROUTHAMEL UPWARD 5241**  
 BD: 03/02/25 Reg #: 21460266 Tattoo: 5241

SITZ DOLLAR UP 489Z  
**GSAR DOLLAR UP 20N**  
 RIVERBEND LADY 61667

#CROUTHAMEL PROTOCOL 3022  
**CROUTHAMEL BLACKBIRD 9003**  
 #CCC LASSIE BLACKBIRD 806

#SITZ UPWARD 307R  
 SITZ BARBARAMERE JET 52U  
 #S A V PRIORITY 7283  
 SANDPOINT LADY 9816  
 CCC MERRITT 030  
 #CCC LADY RAIN 932  
 #H A IMAGE MAKER 0415  
 MCCOY BLACKBIRD 505-N66

BW	83
Adj 205	688
WW Ratio	105
Adj. 365	
YW Ratio	
Dam's NR	5/100

**100 CROUTHAMEL UPWARD 5229**  
 BD: 02/27/25 Reg #: 21460259 Tattoo: 5229

SITZ DOLLAR UP 489Z  
**GSAR DOLLAR UP 20N**  
 RIVERBEND LADY 61667

CCC MERRITT 030  
**CROUTHAMEL BLACKBIRD MERE8514**  
 CCC BLACKBIRD MERE 938

#SITZ UPWARD 307R  
 SITZ BARBARAMERE JET 52U  
 #S A V PRIORITY 7283  
 SANDPOINT LADY 9816  
 #CONNEALY PACKER 547  
 MVCC GAR BANDO 1240  
 MYTTY FOREFRONT 77P  
 S A V BLACKBIRD MERE 6298

BW	84
Adj 205	716
WW Ratio	110
Adj. 365	
YW Ratio	
Dam's NR	5/108

CED	BW	WW	YW	RADG	DOC	HP	CEM	Milk	Marb	RE	\$M	\$B	\$C
8	0.2	70	121	0.25	22	12.8	9	31	0.58	0.75	88	148	280

CED	BW	WW	YW	RADG	DOC	HP	CEM	Milk	Marb	RE	\$M	\$B	\$C
4	2.2	76	131	0.22	17	9.6	9	29	0.58	0.72	63	144	250

**99 CROUTHAMEL DOLLAR UP 5212**  
 BD: 02/23/25 Reg #: 21460251 Tattoo: 5212

SITZ DOLLAR UP 489Z  
**GSAR DOLLAR UP 20N**  
 RIVERBEND LADY 61667

MYTTY EMBLAZON U376  
**CCC BLACKBIRD 1080**  
 CCC BLACKBIRD 971

#SITZ UPWARD 307R  
 SITZ BARBARAMERE JET 52U  
 #S A V PRIORITY 7283  
 SANDPOINT LADY 9816  
 #O C C EMBLAZON 854E  
 E F RITA 2275  
 MYTTY ALLIANCE S247  
 MCCOY BLACKBIRD 505-N66

BW	88
Adj 205	631
WW Ratio	97
Adj. 365	
YW Ratio	
Dam's NR	13/100

**101 CROUTHAMEL SPUR 5288**  
 BD: 03/15/25 Reg #: 21479492 Tattoo: 5288

CROUTHAMEL SPUR 1011  
**OX SPUR 3505**  
 OX BUENA 0339

PACIFIC CATTLE RELEVANT 987  
**CROUTHAMEL LASS 3257**  
 GPAR LADY H60

#CONNEALY SPUR  
 #CROUTHAMEL COUNTESS 5043  
 MYTTY RESOURCE 7701  
 OX BOW BUENA 5118  
 #S A V RENOWN 3439  
 CCC MISSY 907  
 #SITZ STELLAR 726D  
 LADY OF PAR 02

BW	78
Adj 205	784
WW Ratio	122
Adj. 365	
YW Ratio	
Dam's NR	1/122

CED	BW	WW	YW	RADG	DOC	HP	CEM	Milk	Marb	RE	\$M	\$B	\$C
6	1.0	58	100	0.17	20	10.9	8	30	0.53	0.35	87	111	231

CED	BW	WW	YW	RADG	DOC	HP	CEM	Milk	Marb	RE	\$M	\$B	\$C
8	1.2	76	125	0.20	26	13.4	11	22	0.65	0.65	92	120	248



# YOUR BUSINESS is *Our* BUSINESS

Breeding cattle is as much our passion as it is our livelihood, but our direct involvement in the feeder cattle sector has given us a unique perspective as well. In 2025, we marketed and shipped over 10,170 head of feeder cattle and over 1,200 head of bred heifers. I put over 42,500 miles on the truck on just customers' cattle. I don't relay these numbers to brag, but I want you to know our commitment to these Crouthamel sired genetics. Last spring we bred over 1,460 heifers A.I. to Crouthamel bulls. We are thoroughly involved and committed to our customers' programs. We have built strong relationships with numerous buying groups, and we value that insight gained from the marketing transactions. With "boots on the ground" at the shipment, we receive a firsthand analysis of what works and what does not. We take that knowledge back to our own cowherd and then set the BALANCE between traits that work in the cowherd and traits that add value in the sorting pen. You really can have it all when you stick to your priorities and don't make any excuses. This exposure to the feeder calf environment directs the priorities in our seedstock selection where it becomes clear that we must balance all the maternal traits vs. adequate growth and direct pounds in the "right package". While considering this important part of the production cycle, you also realize the value of performance when selling yearling bulls [and their resulting offspring] to be profitable. Payweight is the driving component of a profitable feeder calf, however this growth and growth curve can be accomplished in the right package. We are talking about cattle that have explosive growth to weaning and then plateau to a more efficient and useful endpoint. We thoroughly enjoy breeding these cattle and all the challenges and opportunities that come with it. If we can ever be of service to you, please don't hesitate to call.



# Fall Long Yearlings

110

## CROUTHAMEL JUSTIFIED 4658

BD: 11/01/24 Reg #: 21452963 Tattoo: 4658

#KG JUSTIFIED 3023  
LCC JUSTIFIED 272  
LCC FROSTY 937

CROUTHAMEL TAHOE 0006  
CROUTHAMEL ERICA LASSIE 2407  
CROUTHAMEL ERICA LASSIE 0306

CONNEALY JUDGMENT  
KG MISS MAGIC 1443  
RIVERBEND 1682 E219  
LCC FROSTY 743A  
#TEHAMA TAHOE B767  
#CROUTHAMEL BLACKBIRD 8008  
#BARSTOW BANKROLL B73  
CROUTHAMEL ERICA LASSIE 6185

BW	
Adj 205	721
WW Ratio	102
Adj. 365	1295
YW Ratio	114

Dam's NR	
1/102	

[ OHF ]

ANGUS 6S

CED	BW	WW	YW	RADG	DOC	HP	CEM	Milk	Marb	RE	\$M	\$B	\$C
15	-0.6	84	160	0.32	22	12.6	13	29	0.56	0.44	55	158	260

112

## CROUTHAMEL BARRICADE 4613

BD: 09/22/24 Reg #: 21452957 Tattoo: 4613

SITZ BARRICADE 632F  
CROUTHAMEL BARRICADE 2545  
CROUTHAMEL BLACKBIRD 7136

#HA PRIME CUT 4493  
CROUTHAMEL BLACKBIRD 0506  
#CROUTHAMEL BLACKBIRD 3068

#SITZ STELLAR 726D  
SITZ BARBARAMERE NELL 765D  
CROUTHAMEL GAME DAY 5045  
#CROUTHAMEL BLACKBIRD 3068  
VERMILION SIRLOIN  
HA MISS BLACKCAP 9127  
MYTTY FOREFRONT 1135  
CCC BLACKBIRD 1080

BW	
Adj 205	780
WW Ratio	111
Adj. 365	1210
YW Ratio	106

Dam's NR	
2/103	

ANGUS 6S

CED	BW	WW	YW	RADG	DOC	HP	CEM	Milk	Marb	RE	\$M	\$B	\$C
6	1.8	72	127	0.25	11	9.6	7	22	0.51	0.67	50	143	235

111

## CROUTHAMEL JUSTIFIED 4661

BD: 11/03/24 Reg #: 21452964 Tattoo: 4661

#KG JUSTIFIED 3023  
LCC JUSTIFIED 272  
LCC FROSTY 937

CROUTHAMEL ORIGINAL 0524  
CROUTHAMEL BLACKBIRD 2422  
CROUTHAMEL BLACKBIRD 6035

CONNEALY JUDGMENT  
KG MISS MAGIC 1443  
RIVERBEND 1682 E219  
LCC FROSTY 743A  
#HA PRIME CUT 4493  
#CROUTHAMEL BLACKBIRD 3068  
CCC MERRITT 030  
CROUTHAMEL BLACKBIRD 2505

BW	
Adj 205	719
WW Ratio	102
Adj. 365	1194
YW Ratio	105

Dam's NR	
1/102	

[ OHF ]

ANGUS 6S

CED	BW	WW	YW	RADG	DOC	HP	CEM	Milk	Marb	RE	\$M	\$B	\$C
10	-0.1	74	132	0.26	22	11.9	9	33	0.57	0.31	72	135	247

113

## CROUTHAMEL BARRICADE 4603

BD: 09/16/24 Reg #: 21452956 Tattoo: 4603

SITZ BARRICADE 632F  
CROUTHAMEL BARRICADE 2545  
CROUTHAMEL BLACKBIRD 7136

CROUTHAMEL GAME DAY 5045  
CROUTHAMEL BLACKBIRD 8233  
CROUTHAMEL BLACKBIRD 6133

#SITZ STELLAR 726D  
SITZ BARBARAMERE NELL 765D  
CROUTHAMEL GAME DAY 5045  
#CROUTHAMEL BLACKBIRD 3068  
#GDAR GAME DAY 449  
CROUTHAMEL BLACKCAP 3503  
JVC EMULATION EXT V910  
JUANADA OF PAR 920

BW	
Adj 205	683
WW Ratio	97
Adj. 365	1033
YW Ratio	91

Dam's NR	
4/101	

ANGUS 6S

CED	BW	WW	YW	RADG	DOC	HP	CEM	Milk	Marb	RE	\$M	\$B	\$C
1	2.4	64	110	0.25	8	10.5	7	23	0.54	0.50	71	134	245

114

## CROUTHAMEL BARRICADE 4678

BD: 11/16/24 Reg #: 21452965 Tattoo: 4678

SITZ BARRICADE 632F  
CROUTHAMEL BARRICADE 2545  
CROUTHAMEL BLACKBIRD 7136

#HA COWBOY UP 5405  
CROUTHAMEL BLACKBIRD 9608  
#CROUTHAMEL BLACKBIRD 3068

#SITZ STELLAR 726D  
SITZ BARBARAMERE NELL 765D  
CROUTHAMEL GAME DAY 5045  
#CROUTHAMEL BLACKBIRD 3068  
HA OUTSIDE 3008  
#HA BLACKCAP LADY 1602  
MYTTY FOREFRONT 1135  
CCC BLACKBIRD 1080

BW	
Adj 205	709
WW Ratio	101
Adj. 365	1095
YW Ratio	96

Dam's NR	
4/98	

ANGUS 6S

CED	BW	WW	YW	RADG	DOC	HP	CEM	Milk	Marb	RE	\$M	\$B	\$C
3	1.5	73	123	0.22	18	11.2	8	24	0.34	0.58	87	124	248

115

## CROUTHAMEL BARRICADE 4628

BD: 09/23/24 Reg #: 21452959 Tattoo: 4628

SITZ BARRICADE 632F  
CROUTHAMEL BARRICADE 2545  
CROUTHAMEL BLACKBIRD 7136

CROUTHAMEL EMBLAZON 1511  
CROUTHAMEL BLACKBIRD 5137  
MYTTY BLACKBIRD 120U

#SITZ STELLAR 726D  
SITZ BARBARAMERE NELL 765D  
CROUTHAMEL GAME DAY 5045  
#CROUTHAMEL BLACKBIRD 3068  
#O C C EMBLAZON 854E  
#DONNAS LASS 1401 FOX CROSS  
MYTTY FOREFRONT 77P  
SITZ BLACKBIRD 107L

BW	
Adj 205	658
WW Ratio	93
Adj. 365	973
YW Ratio	88

Dam's NR	
7/100	

ANGUS 6S

CED	BW	WW	YW	RADG	DOC	HP	CEM	Milk	Marb	RE	\$M	\$B	\$C
-5	2.5	50	80	0.13	6	12.2	-1	21	0.39	0.28	72	98	199



**116****CROUTHAMEL ORIGINAL 4642**

BD: 10/10/24 Reg #: 21452961 Tattoo: 4642

#HA PRIME CUT 4493  
**CROUTHAMEL ORIGINAL 0524**  
#CROUTHAMEL BLACKBIRD 3068MYTTY THUNDERSTRUCK  
**SACKMANN COUNTESS 525**  
MYTTY COUNTESS S233VERMILION SIRLOIN  
HA MISS BLACKCAP 9127  
MYTTY FOREFRONT 1135  
CCC BLACKBIRD 1080  
#CONNEALY THUNDER  
SITZ EVERELDA ENTENSE 5038  
#G A R INTEGRITY  
MYTTY COUNTESS 906

BW	
Adj 205	740
WW Ratio	105
Adj. 365	1250
YW Ratio	113
Dam's NR	
	6/98

ANGUS<sup>GS</sup>

CED	BW	WW	YW	RADG	DOC	HP	CEM	Milk	Marb	RE	\$M	\$B	\$C
0	3.5	87	156	0.31	26	10.4	3	28	0.60	0.43	71	155	272

**120****CROUTHAMEL ORIGINAL 4616**

BD: 09/23/24 Reg #: 21452958 Tattoo: 4616

#HA PRIME CUT 4493  
**CROUTHAMEL ORIGINAL 0524**  
#CROUTHAMEL BLACKBIRD 3068#BARSTOW BANKROLL B73  
**CROUTHAMEL BLACKBIRD 0312**  
#CROUTHAMEL BLACKBIRD 3068VERMILION SIRLOIN  
HA MISS BLACKCAP 9127  
MYTTY FOREFRONT 1135  
CCC BLACKBIRD 1080  
#BARSTOW CASH  
BARSTOW MISS DIANNA Z25  
MYTTY FOREFRONT 1135  
CCC BLACKBIRD 1080

BW	
Adj 205	721
WW Ratio	102
Adj. 365	1102
YW Ratio	97
Dam's NR	
	3/102

ANGUS<sup>GS</sup>

CED	BW	WW	YW	RADG	DOC	HP	CEM	Milk	Marb	RE	\$M	\$B	\$C
3	0.5	76	126	0.28	23	11.1	1	30	0.62	0.72	64	169	283

**117****CROUTHAMEL ORIGINAL 4657**

BD: 10/30/24 Reg #: 21452962 Tattoo: 4657

#HA PRIME CUT 4493  
**CROUTHAMEL ORIGINAL 0524**  
#CROUTHAMEL BLACKBIRD 3068#S POWERPOINT WS 5503  
**CROUTHAMEL BLACKBIRD 9270**  
#CROUTHAMEL BLACKBIRD 3068VERMILION SIRLOIN  
HA MISS BLACKCAP 9127  
MYTTY FOREFRONT 1135  
CCC BLACKBIRD 1080  
TEHAMA REVERE  
S QUEEN ESSA 248  
MYTTY FOREFRONT 1135  
CCC BLACKBIRD 1080

BW	
Adj 205	745
WW Ratio	106
Adj. 365	1190
YW Ratio	105
Dam's NR	
	4/112

ANGUS<sup>GS</sup>

CED	BW	WW	YW	RADG	DOC	HP	CEM	Milk	Marb	RE	\$M	\$B	\$C
7	0.6	73	129	0.25	13	12.5	11	32	0.36	0.54	54	132	225

**121****CROUTHAMEL ORIGINAL 4677**

BD: 11/27/24 Reg #: 21452966 Tattoo: 4677

#HA PRIME CUT 4493  
**CROUTHAMEL ORIGINAL 0524**  
#CROUTHAMEL BLACKBIRD 3068#S A V 8180 TRAVELER 004  
**JR SLS KINOCOTRY BEAUTY 5397**  
BTR KINOCOTRY BEAUTY 5102VERMILION SIRLOIN  
HA MISS BLACKCAP 9127  
MYTTY FOREFRONT 1135  
CCC BLACKBIRD 1080  
#SITZ TRAVELER 8180  
BOYD FOREVER LADY 8003  
#VERMILION YELLOWSTONE  
B T R KINOCOTRY BEAUTY 24

BW	
Adj 205	740
WW Ratio	105
Adj. 365	1206
YW Ratio	106
Dam's NR	
	14/103

ANGUS<sup>GS</sup>

CED	BW	WW	YW	RADG	DOC	HP	CEM	Milk	Marb	RE	\$M	\$B	\$C
3	2.8	67	118	0.23	15	10.5	9	28	0.40	0.44	46	138	225

**118****CROUTHAMEL ORIGINAL 4676**

BD: 11/25/24 Reg #: 21452967 Tattoo: 4676

#HA PRIME CUT 4493  
**CROUTHAMEL ORIGINAL 0524**  
#CROUTHAMEL BLACKBIRD 3068#KG JUSTIFIED 3023  
**CROUTHAMEL ERICA 7015**  
CROUTHAMEL ERICA 5102VERMILION SIRLOIN  
HA MISS BLACKCAP 9127  
MYTTY FOREFRONT 1135  
CCC BLACKBIRD 1080  
CONNEALY JUDGMENT  
KG MISS MAGIC 1443  
#CROUTHAMEL PROTOCOL 3022  
CCC DONNAS LASS 1532

BW	
Adj 205	738
WW Ratio	105
Adj. 365	1128
YW Ratio	99
Dam's NR	
	6/104

ANGUS<sup>GS</sup>

CED	BW	WW	YW	RADG	DOC	HP	CEM	Milk	Marb	RE	\$M	\$B	\$C
9	0.6	73	118	0.20	19	11.7	10	29	0.71	0.55	69	156	271

**122****CROUTHAMEL RELEVANCE 4648**

BD: 10/16/24 Reg #: 21476435 Tattoo: 4648

#S A V RENOWN 3439  
**PACIFIC CATTLE RELEVANCE 041**  
CCC MISSY 907OX BOW OZZIE 3233  
**CROUTHAMEL BUENA 9193**  
#OX BOW BUENA 145RITO 707 OF IDEAL 3407 7075  
S A V BLACKCAP MAY 4136  
#CONNEALY PACKER 547  
C C MISSY 704  
#GDAR GAME DAY 449  
OX BOW BLACKBIRD 1139  
#WOODHILL FORESIGHT  
#OX BOW BUENA 786

BW	
Adj 205	692
WW Ratio	100
Adj. 365	1278
YW Ratio	100
Dam's NR	
	4/100

ANGUS<sup>GS</sup>

CED	BW	WW	YW	RADG	DOC	HP	CEM	Milk	Marb	RE	\$M	\$B	\$C
3	2.3	66	118	0.24	21	13.4	5	24	0.37	0.74	75	120	231

**119****CROUTHAMEL ORIGINAL 4638**

BD: 10/03/24 Reg #: 21452960 Tattoo: 4638

#HA PRIME CUT 4493  
**CROUTHAMEL ORIGINAL 0524**  
#CROUTHAMEL BLACKBIRD 3068#S A V REGISTRY 2831  
**CROUTHAMEL BLACKBIRDMERE7578**  
CCC BLACKBIRDMERE 938VERMILION SIRLOIN  
HA MISS BLACKCAP 9127  
MYTTY FOREFRONT 1135  
CCC BLACKBIRD 1080  
RITO 707 OF IDEAL 3407 7075  
S A V MADAME PRIDE 0075  
MYTTY FOREFRONT 77P  
S A V BLACKBIRDMERE 6298

BW	
Adj 205	675
WW Ratio	96
Adj. 365	1045
YW Ratio	95
Dam's NR	
	6/97

ANGUS<sup>GS</sup>

CED	BW	WW	YW	RADG	DOC	HP	CEM	Milk	Marb	RE	\$M	\$B	\$C
-1	4.1	57	97	0.21	8	8.5	2	26	-0.18	0.54	15	82	121



CCC Blackbirdmere 938 // Granddam of Lot 119

# Crouthamel Charolais *genetics*

We started our Charolais program four years ago after customers inquired about an outcross option to maintain some hybrid vigor and performance. We scoured the country to source some registered Charolais females that were developed from programs that shared similar breeding philosophy and principles of our own. We have utilized embryo transfer to achieve some uniformity and consistency in this endeavor, and we are happy with the results. Though we are not large in number, we hope you'll appreciate these bulls for the same reasons as our Angus bulls.

## 126 CROUTHAMEL REVOLVER TW 451

BD: 10/2/24 Reg #: M1019481 Tattoo: 451

CCC WC REDEMPTION 7143 PLD ET <b>CROUTHAMEL REVOLVER 002</b> WC PEARL 4030 P	CCC WC RESOURCE 417 P WC ROLLS ROYCE 3177 P ET LT RUSHMORE 8060 PLD WC-LT PEARL 1547 P ET LT RIO BRAVO 3181 P LT BRENDA'S EASE 3055PLD DA PASSPORT 502 P ET LT EASE'S PEARL 9034 PLD	<b>BW</b> 80 <b>Adj 205</b> 655 <b>WW Ratio</b> 100 <b>Adj. 365</b> 1000 <b>YW Ratio</b> 100
------------------------------------------------------------------------------------	-----------------------------------------------------------------------------------------------------------------------------------------------------------------------------------------------------------	----------------------------------------------------------------------------------------------------------

ANGUS<sup>GS</sup>  
Genetics by the Numbers

CED	BW	WW	YW	CEM	Milk	CW	Marb	RE	Fat	TS1
16.0	-3.1	64	113	7.2	33	20	0.19	0.68	0.038	261

In an effort to achieve more uniformity and homozygosity of genes, we did a mother/son mating here as we believe in the cow power here strong enough to put her on both sides of the pedigree.

## 125 CROUTHAMEL REVOLVER 450

BD: 8/15/24 Reg #: M1019480 Tattoo: 450

CCC WC REDEMPTION 7143 PLD ET <b>CROUTHAMEL REVOLVER 002</b> WC PEARL 4030 P	CCC WC RESOURCE 417 P WC ROLLS ROYCE 3177 P ET LT RUSHMORE 8060 PLD WC-LT PEARL 1547 P ET LT BLUEGRASS 4017 P LT UNLIMITED MAID 7184 P VCR SIR DUKE 914 PLD JWK CLARICE D050 ET	<b>BW</b> 85 <b>Adj 205</b> <b>WW Ratio</b> <b>Adj. 365</b> <b>YW Ratio</b>
------------------------------------------------------------------------------------	------------------------------------------------------------------------------------------------------------------------------------------------------------------------------------------------------	-----------------------------------------------------------------------------------------

ANGUS<sup>GS</sup>  
Genetics by the Numbers

CED	BW	WW	YW	CEM	Milk	CW	Marb	RE	Fat	TS1
15.0	-2.5	69	115	10.9	33	21	0.25	0.57	0.026	262

High-performance Revolver son with some added age. Donor dam that is still working at 13 years old. This bull will get a lot of work done and is easy to be around as far as temperament.

## 127 CROUTHAMEL REVOLVER 454

BD: 11/6/24 Reg #: M1019610 Tattoo: 454

CCC WC REDEMPTION 7143 PLD ET <b>CROUTHAMEL REVOLVER 002</b> WC PEARL 4030 P	CCC WC RESOURCE 417 P WC ROLLS ROYCE 3177 P ET LT RUSHMORE 8060 PLD WC-LT PEARL 1547 P ET CCC WC RESOURCE 417 P WC ROLLS ROYCE 3177 P ET MC SANDMAN 553 ET BFI MAJESTIC 144	<b>BW</b> 84 <b>Adj 205</b> 665 <b>WW Ratio</b> 100 <b>Adj. 365</b> 1110 <b>YW Ratio</b> 100
------------------------------------------------------------------------------------	--------------------------------------------------------------------------------------------------------------------------------------------------------------------------------------------------	----------------------------------------------------------------------------------------------------------

ANGUS<sup>GS</sup>  
Genetics by the Numbers

CED	BW	WW	YW	CEM	Milk	CW	Marb	RE	Fat	TS1
12.4	-0.8	65	115	7.0	30	19	0.20	0.59	0.031	255



128

**CROUTHAMEL REVOLVER 502**

BD: 1/27/25 Reg #: M1019888 Tattoo: 502

CCC WC REDEMPTION 7143 PLD ET  
**CROUTHAMEL REVOLVER 002**  
WC PEARL 4030 P

TR MR OUTKAST 6605D  
**CROUTHAMEL IMPRESSIVE 1571**  
JCR IMPRESSIVE 759 P

CCC WC RESOURCE 417 P  
WC ROLLS ROYCE 3177 P ET  
LT RUSHMORE 8060 PLD  
WC-LT PEARL 1547 P ET  
M&M OUTSIDER 4003 PLD  
TR MS DIABLO 3631A  
WCR SIR IMPRESS 1325 P  
JCR MISS DUKE 3139 ET

BW	86
Adj 205	715
WW Ratio	98
Adj. 365	1033
YW Ratio	101

ANGUS<sup>GS</sup>

CED	BW	WW	YW	CEM	Milk	CW	Marb	RE	Fat	TS1
12.2	-1.5	64	115	6.0	24	20	0.14	0.60	0.021	256

Dam to this bull is sired by TR Mr. Outkast 6605D, the extremely popular Triple Crown winner and National Champion bull in the Charolais breed. He's a calving ease sire who is in the top 15% for CE and BW, but combines lots of length, muscle, and performance. The weaning performance in this Revolver son was just as good.

129

**CROUTHAMEL REVOLVER 506**

BD: 2/4/25 Reg #: M1019889 Tattoo: 506

CCC WC REDEMPTION 7143 PLD ET  
**CROUTHAMEL REVOLVER 002**  
WC PEARL 4030 P

TR MR OUTKAST 6605D  
**CROUTHAMEL IMPRESSIVE 1570**  
JCR IMPRESSIVE 759 P

CCC WC RESOURCE 417 P  
WC ROLLS ROYCE 3177 P ET  
LT RUSHMORE 8060 PLD  
WC-LT PEARL 1547 P ET  
M&M OUTSIDER 4003 PLD  
TR MS DIABLO 3631A  
WCR SIR IMPRESS 1325 P  
JCR MISS DUKE 3139 ET

BW	88
Adj 205	740
WW Ratio	102
Adj. 365	1018
YW Ratio	99

ANGUS<sup>GS</sup>

CED	BW	WW	YW	CEM	Milk	CW	Marb	RE	Fat	TS1
12.2	-1.2	66	115	6.0	24	20	0.14	0.60	0.021	255

This bull is a full sibling-in-blood to the Lot 128 bull as his dam is a flush sister again out of the Outkast sire. He has tremendous performance potential and charted the highest Adjusted 205-day weight in the spring-calving contemporary.

130

**CROUTHAMEL REVOLVER 505**

BD: Reg #: Tattoo: 505

CCC WC REDEMPTION 7143 PLD ET  
**CROUTHAMEL REVOLVER 002**  
WC PEARL 4030 P

CML RAINDANCE 996G  
**CROUTHAMEL QUEEN 212**  
WC QUEEN 1120 P

CCC WC RESOURCE 417 P  
WC ROLLS ROYCE 3177 P ET  
LT RUSHMORE 8060 PLD  
WC-LT PEARL 1547 P ET  
LT PATRIOT 4004 PLD  
CML PLD WILMA 3S  
LT STAGECOACH 8068 PLD  
LT EASY QUEEN 7067 P

BW	
Adj 205	
WW Ratio	
Adj. 365	
YW Ratio	

ANGUS<sup>GS</sup>

CED	BW	WW	YW	CEM	Milk	CW	Marb	RE	Fat	TS1
13.7	-2.2	67	121	10.4	30	26	0.12	0.61	0.030	263

Dam is a nice Raindance daughter out of the Queen 1120 donor that was another one of our selections in the Fall Mature Cow Dispersal at Wright's. She made it to 14 years of age and has multiple sons working in purebred herds. This is a low BW pedigree that won't disappoint in terms of production and longevity.

131

**CROUTHAMEL REVOLVER 503**

BD: 2/3/25 Reg #: M1019592 Tattoo: 503

CCC WC REDEMPTION 7143 PLD ET  
**CROUTHAMEL REVOLVER 002**  
WC PEARL 4030 P

LT BLUEGRASS 4017 P  
**WC CLARICE 2184 P ET**  
JWK CLARICE J139 ET

CCC WC RESOURCE 417 P  
WC ROLLS ROYCE 3177 P ET  
LT RUSHMORE 8060 PLD  
WC-LT PEARL 1547 P ET  
LT ASSERTION 1277 P  
LT PEARL'S BREEZE 2236 P  
WCR SIR DUKE 914 PLD  
JWK CLARICE D050 ET

BW	93
Adj 205	671
WW Ratio	102
Adj. 365	901
YW Ratio	100

ANGUS<sup>GS</sup>

CED	BW	WW	YW	CEM	Milk	CW	Marb	RE	Fat	TS1
15.3	-1.6	65	112	9.6	30	17	0.24	0.65	0.017	260

Dam was our selection in Wright Charolais Female Sale in Missouri. You can drive long and hard to find a female as solid as this [Bluegrass x JWK Clarice J139]. The Clarice cow family is built on big time cow power. They are level, deep, great uddered, and have a ton of look. The mothering ability is outstanding, and we are very high on this cow.

132

**CROUTHAMEL REVOLVER 507**

BD: 2/14/25 Reg #: M1019591 Tattoo: 507

CCC WC REDEMPTION 7143 PLD ET  
**CROUTHAMEL REVOLVER 002**  
WC PEARL 4030 P

WC TOTAL RUSH 3044 P  
**WC DUTCHESS 5534 P**  
WC DUTCHESS 3517 P

CCC WC RESOURCE 417 P  
WC ROLLS ROYCE 3177 P ET  
LT RUSHMORE 8060 PLD  
WC-LT PEARL 1547 P ET  
LT RUSHMORE 8060 PLD  
WC QUEEN 1120 P  
LT LONG DISTANCE 9001 PLD  
WC BLUE DUTCHESS 9058

BW	85
Adj 205	594
WW Ratio	90
Adj. 365	812
YW Ratio	90

ANGUS<sup>GS</sup>

CED	BW	WW	YW	CEM	Milk	CW	Marb	RE	Fat	TS1
14.4	-2.7	60	102	8.3	32	16	0.18	0.59	0.029	252

133

**CROUTHAMEL REVOLVER 508**

BD: 2/16/25 Reg #: M1019590 Tattoo: 508

CCC WC REDEMPTION 7143 PLD ET  
**CROUTHAMEL REVOLVER 002**  
WC PEARL 4030 P

CML RAINDANCE 996G  
**CROUTHAMEL CLARICE 115**  
WC CLARICE 3558 P ET

CCC WC RESOURCE 417 P  
WC ROLLS ROYCE 3177 P ET  
LT RUSHMORE 8060 PLD  
WC-LT PEARL 1547 P ET  
LT PATRIOT 4004 PLD  
CML PLD WILMA 3S  
LT BLUE VALUE 7903 ET  
JWK CLARICE J139 ET

BW	82
Adj 205	713
WW Ratio	108
Adj. 365	998
YW Ratio	110

ANGUS<sup>GS</sup>

CED	BW	WW	YW	CEM	Milk	CW	Marb	RE	Fat	TS1
13.3	-2.1	74	131	10.2	31	25	0.19	0.64	0.029	265

Nice bull here combining the Revolver with a great young Raindance cow back to the great 3558 Clarice cow who is still working strong here at 13 years old. We simply cannot get enough of the Clarice cow family. They are maternal, wedge shaped, and very productive. Moderate Birth, big spread son, that will make outstanding females. Great prospect here.

# Coverage For Your Livestock

Mortality—Livestock Risk Protection—Pasture, Range & Forage

You have your finances, time and resources invested in your livestock. Protect that investment with Mortality coverage, Livestock Risk Protection (protection from declining market prices) and Pasture, Range & Forage Insurance (protection for drought on your pasture and hay ground).

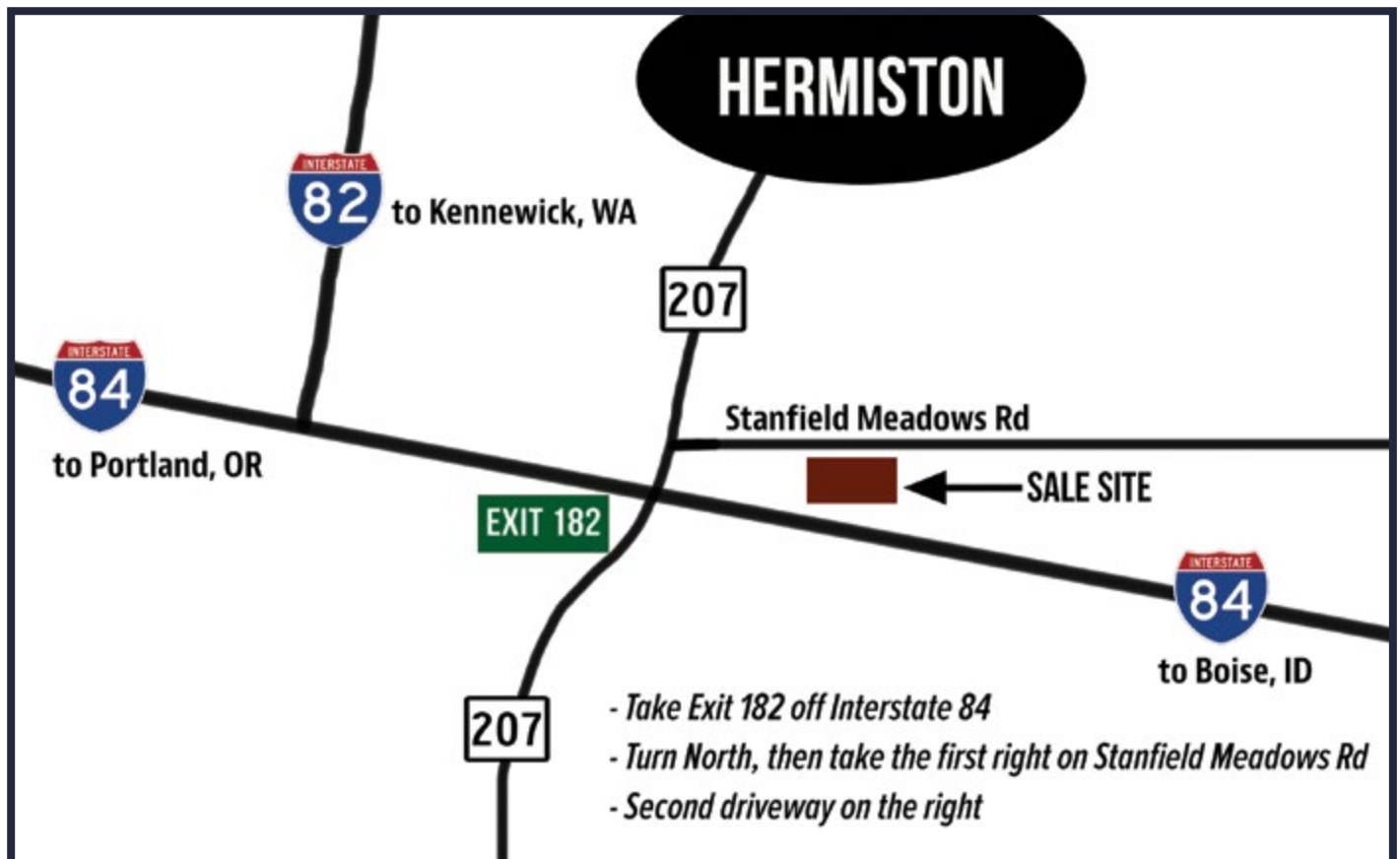
For details contact:

**David Yackley**

**360.266.8000**

**David@creekinsure.com**

**Napavine, WA and Henderson**



**CROUTHAMEL**  **CATTLE CO.**

PO Box 255 · Touchet, WA 99360

**Cory Crouthamel**    **509-948-6304**  
**John Dickinson**    **916-806-1919**

